

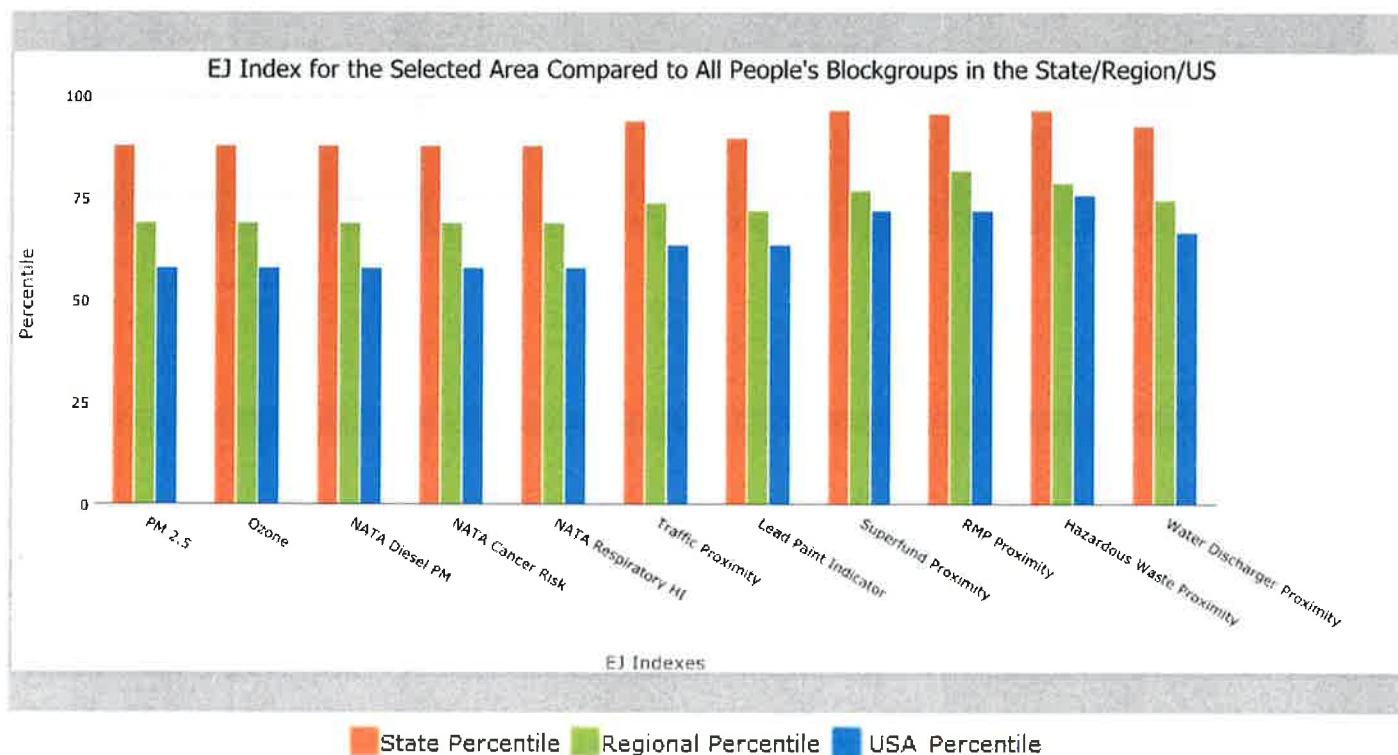
0.25 mile Ring around the Corridor, WEST VIRGINIA, EPA Region 3

Approximate Population: 3,355

Input Area (sq. miles): 1.91

Greenbag Rd Improvements

Selected Variables	State Percentile	EPA Region Percentile	USA Percentile
EJ Indexes			
EJ Index for PM _{2.5}	88	69	58
EJ Index for Ozone	88	69	58
EJ Index for NATA* Diesel PM	88	69	58
EJ Index for NATA* Air Toxics Cancer Risk	88	69	58
EJ Index for NATA* Respiratory Hazard Index	88	69	58
EJ Index for Traffic Proximity and Volume	94	74	64
EJ Index for Lead Paint Indicator	90	72	64
EJ Index for Proximity to NPL sites	97	77	72
EJ Index for Proximity to RMP sites	96	82	72
EJ Index for Proximity to TSDFs	97	79	76
EJ Index for Proximity to Major Direct Dischargers	93	75	67



This report shows the values for environmental and demographic indicators and EJSCREEN indexes. It shows environmental and demographic raw data (e.g., the estimated concentration of ozone in the air), and also shows what percentile each raw data value represents. These percentiles provide perspective on how the selected block group or buffer area compares to the entire state, EPA region, or nation. For example, if a given location is at the 95th percentile nationwide, this means that only 5 percent of the US population has a higher block group value than the average person in the location being analyzed. The years for which the data are available, and the methods used, vary across these indicators. Important caveats and uncertainties apply to this screening-level information, so it is essential to understand the limitations on appropriate interpretations and applications of these indicators. Please see EJSCREEN documentation for discussion of these issues before using reports.

EJSCREEN Report (Version 2016)



0.25 mile Ring around the Corridor, WEST VIRGINIA, EPA Region 3

Approximate Population: 3,355

Input Area (sq. miles): 1.91

Greenbag Rd Improvements

Selected Variables	Value	State Avg.	%ile in State	EPA Region Avg.	%ile in EPA Region	USA Avg.	%ile in USA
Environmental Indicators							
Particulate Matter (PM 2.5 in $\mu\text{g}/\text{m}^3$)	9.52	9.51	46	9.84	36	9.32	50
Ozone (ppb)	50.8	50.1	65	49.8	59	47.4	67
NATA* Diesel PM ($\mu\text{g}/\text{m}^3$)	0.576	0.439	76	0.918	<50th	0.937	<50th
NATA* Cancer Risk (lifetime risk per million)	30	34	39	42	<50th	40	<50th
NATA* Respiratory Hazard Index	1.2	1.3	49	1.8	<50th	1.8	<50th
Traffic Proximity and Volume (daily traffic count/distance to road)	61	58	74	350	46	590	43
Lead Paint Indicator (% Pre-1960 Housing)	0.21	0.35	34	0.37	40	0.3	52
NPL Proximity (site count/km distance)	0.36	0.074	97	0.15	92	0.13	93
RMP Proximity (facility count/km distance)	1.5	0.29	96	0.35	95	0.43	93
TSDF Proximity (facility count/km distance)	0.43	0.076	97	0.11	96	0.072	97
Water Discharger Proximity (facility count/km distance)	1.4	0.42	92	0.37	94	0.31	96
Demographic Indicators							
Demographic Index	33%	24%	85	30%	66	36%	54
Minority Population	18%	7%	90	31%	48	37%	38
Low Income Population	47%	40%	69	29%	82	35%	72
Linguistically Isolated Population	1%	0%	88	2%	57	5%	46
Population With Less Than High School Education	14%	16%	48	12%	67	14%	61
Population Under 5 years of age	8%	6%	80	6%	76	6%	71
Population over 64 years of age	11%	17%	21	15%	38	14%	45

* The National-Scale Air Toxics Assessment (NATA) is EPA's ongoing, comprehensive evaluation of air toxics in the United States. EPA developed the NATA to prioritize air toxics, emission sources, and locations of interest for further study. It is important to remember that NATA provides broad estimates of health risks over geographic areas of the country, not definitive risks to specific individuals or locations. More information on the NATA analysis can be found at: <https://www.epa.gov/national-air-toxics-assessment>.

For additional information, see: www.epa.gov/environmentaljustice

EJSCREEN is a screening tool for pre-decisional use only. It can help identify areas that may warrant additional consideration, analysis, or outreach. It does not provide a basis for decision-making, but it may help identify potential areas of EJ concern. Users should keep in mind that screening tools are subject to substantial uncertainty in their demographic and environmental data, particularly when looking at small geographic areas. Important caveats and uncertainties apply to this screening-level information, so it is essential to understand the limitations on appropriate interpretations and applications of these indicators. Please see EJSCREEN documentation for discussion of these issues before using reports. This screening tool does not provide data on every environmental impact and demographic factor that may be relevant to a particular location. EJSCREEN outputs should be supplemented with additional information and local knowledge before taking any action to address potential EJ concerns.

Location: User-specified linear location

Ring (buffer): 0.25-mile radius

Description: Greenbag Rd Improvements

Summary of ACS Estimates		2010 - 2014		
Population				3,355
Population Density (per sq. mile)				2,137
Minority Population				619
% Minority				18%
Households				809
Housing Units				939
Housing Units Built Before 1950				106
Per Capita Income				25,421
Land Area (sq. miles) (Source: SF1)				1.57
% Land Area				100%
Water Area (sq. miles) (Source: SF1)				0.00
% Water Area				0%
		2010 - 2014 ACS Estimates	Percent	MOE (±)
Population by Race				
Total		3,355	100%	423
Population Reporting One Race		3,208	96%	644
White		2,854	85%	403
Black		319	10%	148
American Indian		9	0%	21
Asian		6	0%	23
Pacific Islander		5	0%	18
Some Other Race		15	0%	31
Population Reporting Two or More Races		147	4%	80
Total Hispanic Population		169	5%	85
Total Non-Hispanic Population		3,186		
White Alone		2,736	82%	419
Black Alone		314	9%	148
American Indian Alone		9	0%	21
Non-Hispanic Asian Alone		6	0%	23
Pacific Islander Alone		5	0%	18
Other Race Alone		0	0%	11
Two or More Races Alone		117	3%	60
Population by Sex				
Male		1,944	58%	242
Female		1,411	42%	243
Population by Age				
Age 0-4		274	8%	141
Age 0-17		623	19%	169
Age 18+		2,732	81%	248
Age 65+		386	11%	110

Data Note: Detail may not sum to totals due to rounding. Hispanic population can be of any race. N/A means not available.

Source: U.S. Census Bureau, American Community Survey (ACS) 2010 - 2014.

Location: User-specified linear location

Ring (buffer): 0.25-mile radius

Description: Greenbag Rd Improvements

	2010 - 2014 ACS Estimates	Percent	MOE (±)
Population by Language Spoken at Home*			
Total (persons age 5 and above)	3,081	100%	314
English	N/A	N/A	N/A
Spanish	N/A	N/A	N/A
French	N/A	N/A	N/A
French Creole	N/A	N/A	N/A
Italian	N/A	N/A	N/A
Portuguese	N/A	N/A	N/A
German	N/A	N/A	N/A
Yiddish	N/A	N/A	N/A
Other West Germanic	N/A	N/A	N/A
Scandinavian	N/A	N/A	N/A
Greek	N/A	N/A	N/A
Russian	N/A	N/A	N/A
Polish	N/A	N/A	N/A
Serbo-Croatian	N/A	N/A	N/A
Other Slavic	N/A	N/A	N/A
Armenian	N/A	N/A	N/A
Persian	N/A	N/A	N/A
Gujarathi	N/A	N/A	N/A
Hindi	N/A	N/A	N/A
Urdu	N/A	N/A	N/A
Other Indic	N/A	N/A	N/A
Other Indo-European	N/A	N/A	N/A
Chinese	N/A	N/A	N/A
Japanese	N/A	N/A	N/A
Korean	N/A	N/A	N/A
Mon-Khmer, Cambodian	N/A	N/A	N/A
Hmong	N/A	N/A	N/A
Thai	N/A	N/A	N/A
Laotian	N/A	N/A	N/A
Vietnamese	N/A	N/A	N/A
Other Asian	N/A	N/A	N/A
Tagalog	N/A	N/A	N/A
Other Pacific Island	N/A	N/A	N/A
Navajo	N/A	N/A	N/A
Other Native American	N/A	N/A	N/A
Hungarian	N/A	N/A	N/A
Arabic	N/A	N/A	N/A
Hebrew	N/A	N/A	N/A
African	N/A	N/A	N/A
Other and non-specified	N/A	N/A	N/A
Total Non-English	N/A	N/A	N/A

Data Note: Detail may not sum to totals due to rounding. Hispanic population can be of any race. N/A means not available. **Source:** U.S. Census Bureau, American Community Survey (ACS) 2010 - 2014.

*Population by Language Spoken at Home is available at the census tract summary level and up.

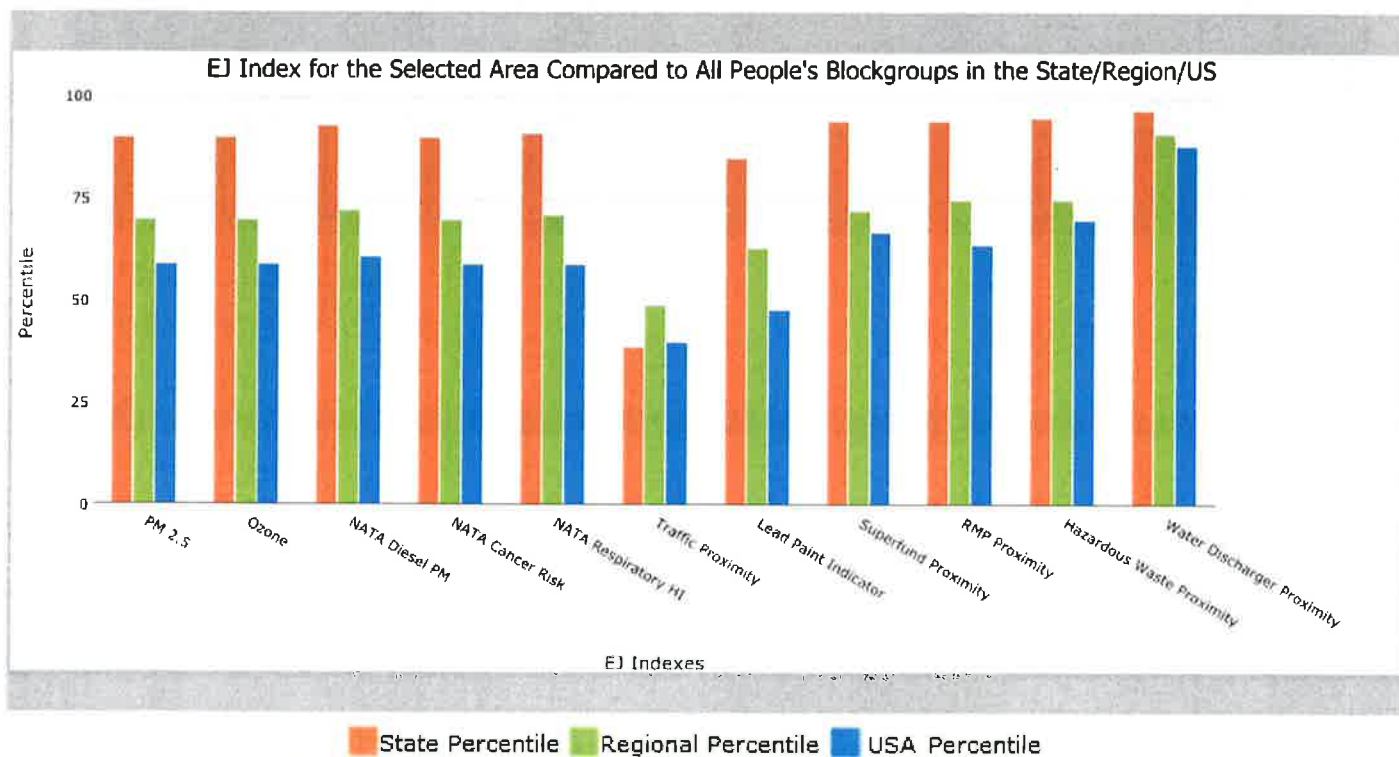
0.25 mile Ring around the Corridor, WEST VIRGINIA, EPA Region 3

Approximate Population: 9,527

Input Area (sq. miles): 1.18

Bus Rapid Transit

Selected Variables	State Percentile	EPA Region Percentile	USA Percentile
EJ Indexes			
EJ Index for PM2.5	90	70	59
EJ Index for Ozone	90	70	59
EJ Index for NATA* Diesel PM	93	72	61
EJ Index for NATA* Air Toxics Cancer Risk	90	70	59
EJ Index for NATA* Respiratory Hazard Index	91	71	59
EJ Index for Traffic Proximity and Volume	39	49	40
EJ Index for Lead Paint Indicator	85	63	48
EJ Index for Proximity to NPL sites	94	72	67
EJ Index for Proximity to RMP sites	94	75	64
EJ Index for Proximity to TSDFs	95	75	70
EJ Index for Proximity to Major Direct Dischargers	97	91	88



This report shows the values for environmental and demographic indicators and EJSCREEN indexes. It shows environmental and demographic raw data (e.g., the estimated concentration of ozone in the air), and also shows what percentile each raw data value represents. These percentiles provide perspective on how the selected block group or buffer area compares to the entire state, EPA region, or nation. For example, if a given location is at the 95th percentile nationwide, this means that only 5 percent of the US population has a higher block group value than the average person in the location being analyzed. The years for which the data are available, and the methods used, vary across these indicators. Important caveats and uncertainties apply to this screening-level information, so it is essential to understand the limitations on appropriate interpretations and applications of these indicators. Please see EJSCREEN documentation for discussion of these issues before using reports.

EJSCREEN Report (Version 2016)



0.25 mile Ring around the Corridor, WEST VIRGINIA, EPA Region 3

Approximate Population: 9,527

Input Area (sq. miles): 1.18

Bus Rapid Transit

Selected Variables	Value	State Avg.	%ile in State	EPA Region Avg.	%ile in EPA Region	USA Avg.	%ile in USA
Environmental Indicators							
Particulate Matter (PM 2.5 in $\mu\text{g}/\text{m}^3$)	9.61	9.51	50	9.84	38	9.32	53
Ozone (ppb)	50.9	50.1	68	49.8	60	47.4	68
NATA* Diesel PM ($\mu\text{g}/\text{m}^3$)	1.01	0.439	94	0.918	60-70th	0.937	60-70th
NATA* Cancer Risk (lifetime risk per million)	40	34	81	42	<50th	40	<50th
NATA* Respiratory Hazard Index	1.9	1.3	87	1.8	50-60th	1.8	60-70th
Traffic Proximity and Volume (daily traffic count/distance to road)	150	58	89	350	60	590	57
Lead Paint Indicator (% Pre-1960 Housing)	0.34	0.35	56	0.37	55	0.3	64
NPL Proximity (site count/km distance)	0.2	0.074	93	0.15	83	0.13	86
RMP Proximity (facility count/km distance)	0.58	0.29	87	0.35	82	0.43	78
TSDF Proximity (facility count/km distance)	0.23	0.076	92	0.11	90	0.072	94
Water Discharger Proximity (facility count/km distance)	2.9	0.42	98	0.37	99	0.31	99
Demographic Indicators							
Demographic Index	40%	24%	94	30%	74	36%	64
Minority Population	13%	7%	84	31%	40	37%	30
Low Income Population	72%	40%	96	29%	96	35%	93
Linguistically Isolated Population	3%	0%	96	2%	75	5%	62
Population With Less Than High School Education	6%	16%	16	12%	35	14%	32
Population Under 5 years of age	1%	6%	7	6%	5	6%	5
Population over 64 years of age	4%	17%	2	15%	6	14%	6

* The National-Scale Air Toxics Assessment (NATA) is EPA's ongoing, comprehensive evaluation of air toxics in the United States. EPA developed the NATA to prioritize air toxics, emission sources, and locations of interest for further study. It is important to remember that NATA provides broad estimates of health risks over geographic areas of the country, not definitive risks to specific individuals or locations. More information on the NATA analysis can be found at: <https://www.epa.gov/national-air-toxics-assessment>.

For additional information, see: www.epa.gov/environmentaljustice

EJSCREEN is a screening tool for pre-decisional use only. It can help identify areas that may warrant additional consideration, analysis, or outreach. It does not provide a basis for decision-making, but it may help identify potential areas of EJ concern. Users should keep in mind that screening tools are subject to substantial uncertainty in their demographic and environmental data, particularly when looking at small geographic areas. Important caveats and uncertainties apply to this screening-level information, so it is essential to understand the limitations on appropriate interpretations and applications of these indicators. Please see EJSCREEN documentation for discussion of these issues before using reports. This screening tool does not provide data on every environmental impact and demographic factor that may be relevant to a particular location. EJSCREEN outputs should be supplemented with additional information and local knowledge before taking any action to address potential EJ concerns.

Location: User-specified linear location

Ring (buffer): 0.25-mile radius

Description: Bus Rapid Transit

Summary of ACS Estimates		2010 - 2014
Population		9,527
Population Density (per sq. mile)		7,456
Minority Population		1,275
% Minority		13%
Households		2,341
Housing Units		3,167
Housing Units Built Before 1950		757
Per Capita Income		15,384
Land Area (sq. miles) (Source: SF1)		1.28
% Land Area		100%
Water Area (sq. miles) (Source: SF1)		0.00
% Water Area		0%

	2010 - 2014 ACS Estimates	Percent	MOE (±)
Population by Race			
Total	9,527	100%	543
Population Reporting One Race	9,292	98%	832
White	8,433	89%	520
Black	191	2%	61
American Indian	0	0%	11
Asian	613	6%	178
Pacific Islander	0	0%	11
Some Other Race	55	1%	51
Population Reporting Two or More Races	235	2%	80
Total Hispanic Population	224	2%	124
Total Non-Hispanic Population	9,303		
White Alone	8,251	87%	482
Black Alone	189	2%	61
American Indian Alone	0	0%	11
Non-Hispanic Asian Alone	613	6%	178
Pacific Islander Alone	0	0%	11
Other Race Alone	31	0%	51
Two or More Races Alone	218	2%	78
Population by Sex			
Male	5,455	57%	494
Female	4,072	43%	398
Population by Age			
Age 0-4	88	1%	64
Age 0-17	416	4%	82
Age 18+	9,111	96%	450
Age 65+	337	4%	84

Data Note: Detail may not sum to totals due to rounding. Hispanic population can be of any race. N/A means not available.

Source: U.S. Census Bureau, American Community Survey (ACS) 2010 - 2014.

Location: User-specified linear location

Ring (buffer): 0.25-mile radius

Description: Bus Rapid Transit

	2010 - 2014 ACS Estimates	Percent	MOE (±)
Population by Language Spoken at Home*			
Total (persons age 5 and above)	9,439	100%	543
English	N/A	N/A	N/A
Spanish	N/A	N/A	N/A
French	N/A	N/A	N/A
French Creole	N/A	N/A	N/A
Italian	N/A	N/A	N/A
Portuguese	N/A	N/A	N/A
German	N/A	N/A	N/A
Yiddish	N/A	N/A	N/A
Other West Germanic	N/A	N/A	N/A
Scandinavian	N/A	N/A	N/A
Greek	N/A	N/A	N/A
Russian	N/A	N/A	N/A
Polish	N/A	N/A	N/A
Serbo-Croatian	N/A	N/A	N/A
Other Slavic	N/A	N/A	N/A
Armenian	N/A	N/A	N/A
Persian	N/A	N/A	N/A
Gujarathi	N/A	N/A	N/A
Hindi	N/A	N/A	N/A
Urdu	N/A	N/A	N/A
Other Indic	N/A	N/A	N/A
Other Indo-European	N/A	N/A	N/A
Chinese	N/A	N/A	N/A
Japanese	N/A	N/A	N/A
Korean	N/A	N/A	N/A
Mon-Khmer, Cambodian	N/A	N/A	N/A
Hmong	N/A	N/A	N/A
Thai	N/A	N/A	N/A
Laotian	N/A	N/A	N/A
Vietnamese	N/A	N/A	N/A
Other Asian	N/A	N/A	N/A
Tagalog	N/A	N/A	N/A
Other Pacific Island	N/A	N/A	N/A
Navajo	N/A	N/A	N/A
Other Native American	N/A	N/A	N/A
Hungarian	N/A	N/A	N/A
Arabic	N/A	N/A	N/A
Hebrew	N/A	N/A	N/A
African	N/A	N/A	N/A
Other and non-specified	N/A	N/A	N/A
Total Non-English	N/A	N/A	N/A

Data Note: Detail may not sum to totals due to rounding. Hispanic population can be of any race. N/A means not available. **Source:** U.S. Census Bureau, American Community Survey (ACS) 2010 - 2014.

*Population by Language Spoken at Home is available at the census tract summary level and up.

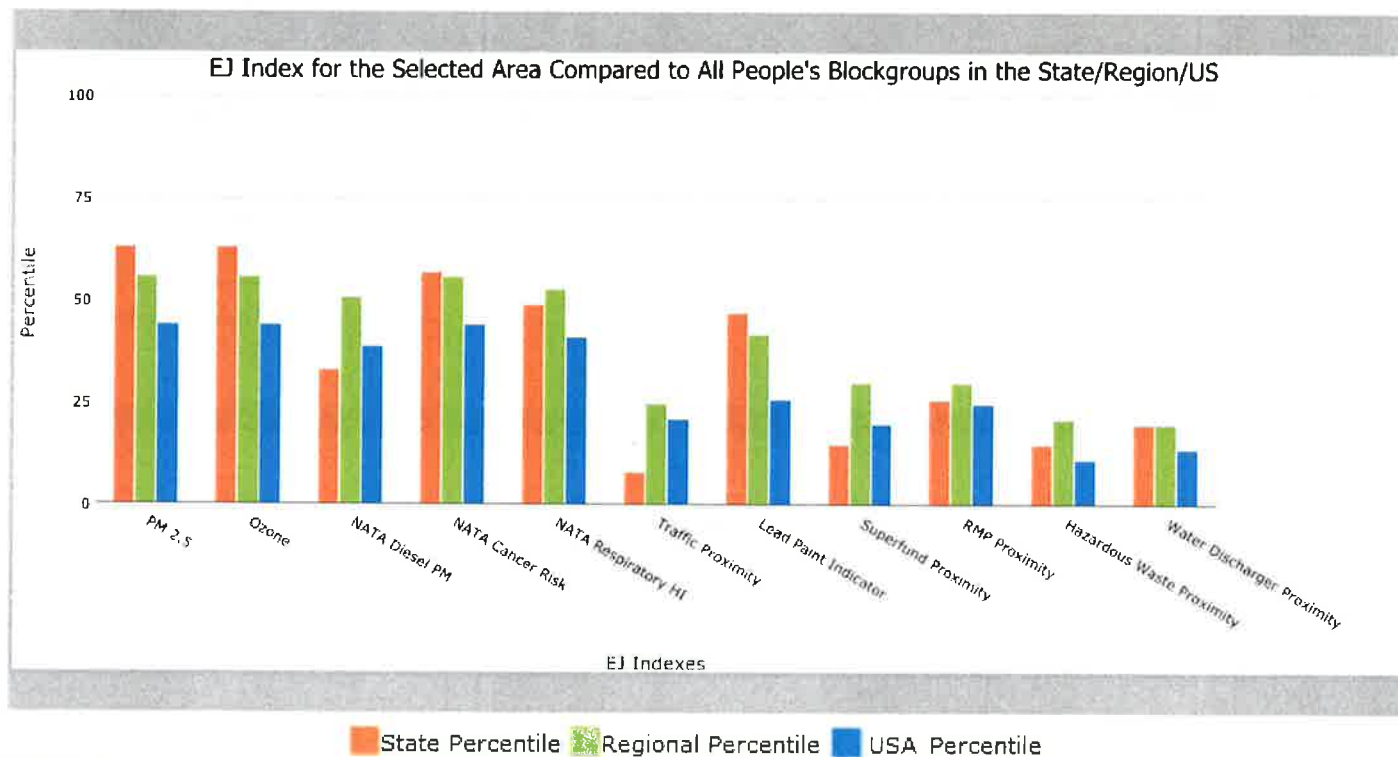
0.25 mile Ring around the Corridor, WEST VIRGINIA, EPA Region 3

Approximate Population: 3,057

Input Area (sq. miles): 0.34

Grant Ave Connector

Selected Variables	State Percentile	EPA Region Percentile	USA Percentile
EJ Indexes			
EJ Index for PM2.5	63	56	44
EJ Index for Ozone	63	56	44
EJ Index for NATA* Diesel PM	33	51	39
EJ Index for NATA* Air Toxics Cancer Risk	57	56	44
EJ Index for NATA* Respiratory Hazard Index	49	53	41
EJ Index for Traffic Proximity and Volume	8	25	21
EJ Index for Lead Paint Indicator	47	42	26
EJ Index for Proximity to NPL sites	15	30	20
EJ Index for Proximity to RMP sites	26	30	25
EJ Index for Proximity to TSDFs	15	21	11
EJ Index for Proximity to Major Direct Dischargers	20	20	14



This report shows the values for environmental and demographic indicators and EJSCREEN indexes. It shows environmental and demographic raw data (e.g., the estimated concentration of ozone in the air), and also shows what percentile each raw data value represents. These percentiles provide perspective on how the selected block group or buffer area compares to the entire state, EPA region, or nation. For example, if a given location is at the 95th percentile nationwide, this means that only 5 percent of the US population has a higher block group value than the average person in the location being analyzed. The years for which the data are available, and the methods used, vary across these indicators. Important caveats and uncertainties apply to this screening-level information, so it is essential to understand the limitations on appropriate interpretations and applications of these indicators. Please see EJSCREEN documentation for discussion of these issues before using reports.

EJSCREEN Report (Version 2016)



0.25 mile Ring around the Corridor, WEST VIRGINIA, EPA Region 3

Approximate Population: 3,057

Input Area (sq. miles): 0.34

Grant Ave Connector

Selected Variables	Value	State Avg.	%ile in State	EPA Region Avg.	%ile in EPA Region	USA Avg.	%ile in USA
Environmental Indicators							
Particulate Matter (PM 2.5 in $\mu\text{g}/\text{m}^3$)	9.63	9.51	52	9.84	39	9.32	53
Ozone (ppb)	50.9	50.1	68	49.8	60	47.4	68
NATA* Diesel PM ($\mu\text{g}/\text{m}^3$)	0.852	0.439	89	0.918	50-60th	0.937	50-60th
NATA* Cancer Risk (lifetime risk per million)	38	34	76	42	<50th	40	<50th
NATA* Respiratory Hazard Index	1.7	1.3	82	1.8	<50th	1.8	50-60th
Traffic Proximity and Volume (daily traffic count/distance to road)	220	58	93	350	66	590	64
Lead Paint Indicator (% Pre-1960 Housing)	0.36	0.35	59	0.37	57	0.3	65
NPL Proximity (site count/km distance)	0.2	0.074	93	0.15	83	0.13	86
RMP Proximity (facility count/km distance)	0.51	0.29	85	0.35	80	0.43	76
TSDF Proximity (facility count/km distance)	0.23	0.076	92	0.11	89	0.072	94
Water Discharger Proximity (facility count/km distance)	2.6	0.42	98	0.37	99	0.31	99
Demographic Indicators							
Demographic Index	36%	24%	89	30%	70	36%	59
Minority Population	17%	7%	88	31%	46	37%	36
Low Income Population	67%	40%	94	29%	94	35%	91
Linguistically Isolated Population	4%	0%	97	2%	79	5%	66
Population With Less Than High School Education	4%	16%	9	12%	22	14%	21
Population Under 5 years of age	0%	6%	5	6%	4	6%	4
Population over 64 years of age	4%	17%	2	15%	8	14%	8

* The National-Scale Air Toxics Assessment (NATA) is EPA's ongoing, comprehensive evaluation of air toxics in the United States. EPA developed the NATA to prioritize air toxics, emission sources, and locations of interest for further study. It is important to remember that NATA provides broad estimates of health risks over geographic areas of the country, not definitive risks to specific individuals or locations. More information on the NATA analysis can be found at: <https://www.epa.gov/national-air-toxics-assessment>.

For additional information, see: www.epa.gov/environmentaljustice

EJSCREEN is a screening tool for pre-decisional use only. It can help identify areas that may warrant additional consideration, analysis, or outreach. It does not provide a basis for decision-making, but it may help identify potential areas of EJ concern. Users should keep in mind that screening tools are subject to substantial uncertainty in their demographic and environmental data, particularly when looking at small geographic areas. Important caveats and uncertainties apply to this screening-level information, so it is essential to understand the limitations on appropriate interpretations and applications of these indicators. Please see EJSCREEN documentation for discussion of these issues before using reports. This screening tool does not provide data on every environmental impact and demographic factor that may be relevant to a particular location. EJSCREEN outputs should be supplemented with additional information and local knowledge before taking any action to address potential EJ concerns.

Location: User-specified linear location

Ring (buffer): 0.25-mile radius

Description: Grant Ave Connector

Summary of ACS Estimates		2010 - 2014		
Population				3,057
Population Density (per sq. mile)				10,155
Minority Population				516
% Minority				17%
Households				523
Housing Units				716
Housing Units Built Before 1950				162
Per Capita Income				17,336
Land Area (sq. miles) (Source: SF1)				0.30
% Land Area				99%
Water Area (sq. miles) (Source: SF1)				0.00
% Water Area				1%
		2010 - 2014 ACS Estimates	Percent	MOE (±)
Population by Race				
Total		3,057	100%	543
Population Reporting One Race		2,945	96%	797
White		2,619	86%	520
Black		49	2%	54
American Indian		0	0%	11
Asian		264	9%	178
Pacific Islander		0	0%	11
Some Other Race		13	0%	23
Population Reporting Two or More Races		111	4%	80
Total Hispanic Population		94	3%	124
Total Non-Hispanic Population		2,962		
White Alone		2,540	83%	464
Black Alone		49	2%	54
American Indian Alone		0	0%	11
Non-Hispanic Asian Alone		264	9%	178
Pacific Islander Alone		0	0%	11
Other Race Alone		5	0%	14
Two or More Races Alone		105	3%	78
Population by Sex				
Male		1,850	61%	342
Female		1,207	39%	281
Population by Age				
Age 0-4		9	0%	30
Age 0-17		87	3%	69
Age 18+		2,969	97%	439
Age 65+		127	4%	67

Data Note: Detail may not sum to totals due to rounding. Hispanic population can be of any race. N/A means not available.

Source: U.S. Census Bureau, American Community Survey (ACS) 2010 - 2014.

Location: User-specified linear location

Ring (buffer): 0.25-mile radius

Description: Grant Ave Connector

	2010 - 2014 ACS Estimates	Percent	MOE (±)
Population by Language Spoken at Home*			
Total (persons age 5 and above)	3,048	100%	543
English	N/A	N/A	N/A
Spanish	N/A	N/A	N/A
French	N/A	N/A	N/A
French Creole	N/A	N/A	N/A
Italian	N/A	N/A	N/A
Portuguese	N/A	N/A	N/A
German	N/A	N/A	N/A
Yiddish	N/A	N/A	N/A
Other West Germanic	N/A	N/A	N/A
Scandinavian	N/A	N/A	N/A
Greek	N/A	N/A	N/A
Russian	N/A	N/A	N/A
Polish	N/A	N/A	N/A
Serbo-Croatian	N/A	N/A	N/A
Other Slavic	N/A	N/A	N/A
Armenian	N/A	N/A	N/A
Persian	N/A	N/A	N/A
Gujarathi	N/A	N/A	N/A
Hindi	N/A	N/A	N/A
Urdu	N/A	N/A	N/A
Other Indic	N/A	N/A	N/A
Other Indo-European	N/A	N/A	N/A
Chinese	N/A	N/A	N/A
Japanese	N/A	N/A	N/A
Korean	N/A	N/A	N/A
Mon-Khmer, Cambodian	N/A	N/A	N/A
Hmong	N/A	N/A	N/A
Thai	N/A	N/A	N/A
Laotian	N/A	N/A	N/A
Vietnamese	N/A	N/A	N/A
Other Asian	N/A	N/A	N/A
Tagalog	N/A	N/A	N/A
Other Pacific Island	N/A	N/A	N/A
Navajo	N/A	N/A	N/A
Other Native American	N/A	N/A	N/A
Hungarian	N/A	N/A	N/A
Arabic	N/A	N/A	N/A
Hebrew	N/A	N/A	N/A
African	N/A	N/A	N/A
Other and non-specified	N/A	N/A	N/A
Total Non-English	N/A	N/A	N/A

Data Note: Detail may not sum to totals due to rounding. Hispanic population can be of any race. N/A means not available. **Source:** U.S. Census Bureau, American Community Survey (ACS) 2010 - 2014.

*Population by Language Spoken at Home is available at the census tract summary level and up.

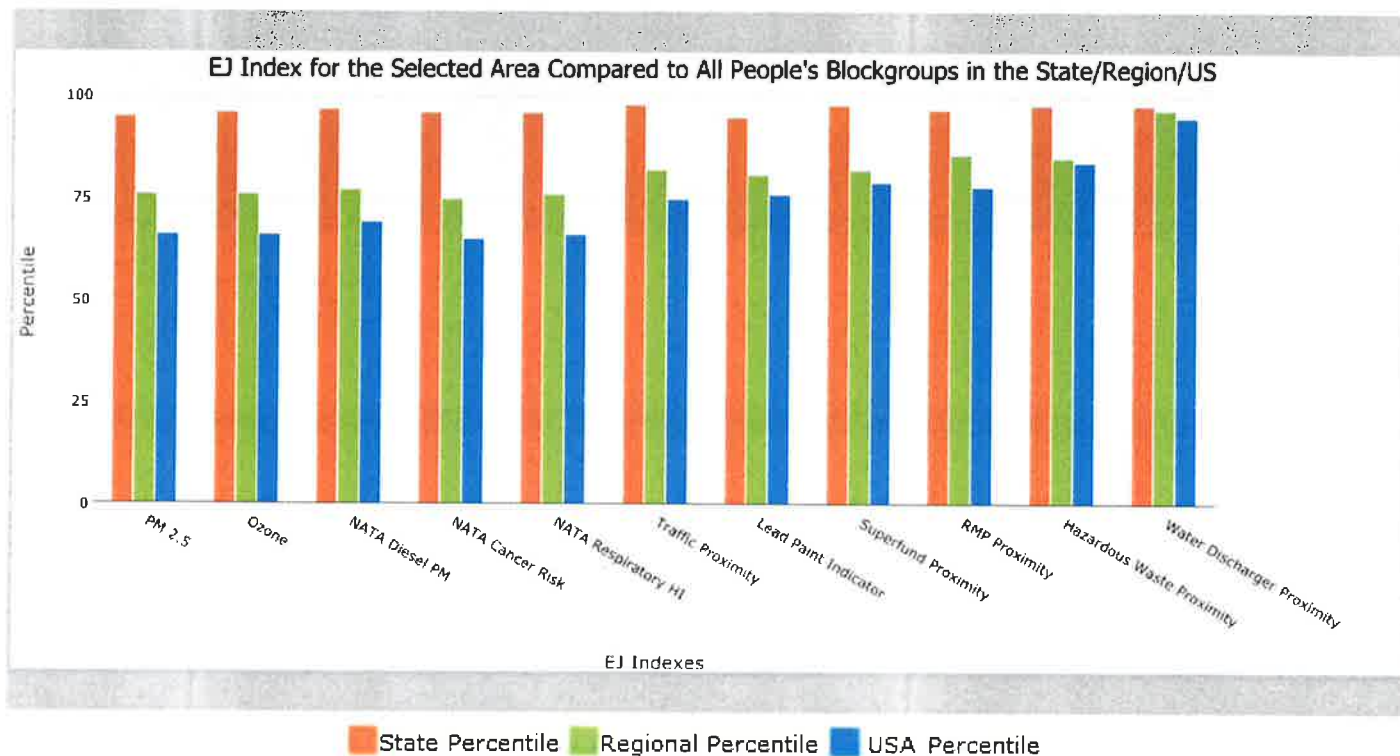
0.25 mile Ring around the Corridor, WEST VIRGINIA, EPA Region 3

Approximate Population: 4,420

Input Area (sq. miles): 0.77

Beechurst Ave Improvements

Selected Variables	State Percentile	EPA Region Percentile	USA Percentile
EJ Indexes			
EJ Index for PM2.5	95	76	66
EJ Index for Ozone	96	76	66
EJ Index for NATA* Diesel PM	97	77	69
EJ Index for NATA* Air Toxics Cancer Risk	96	75	65
EJ Index for NATA* Respiratory Hazard Index	96	76	66
EJ Index for Traffic Proximity and Volume	98	82	75
EJ Index for Lead Paint Indicator	95	81	76
EJ Index for Proximity to NPL sites	98	82	79
EJ Index for Proximity to RMP sites	97	86	78
EJ Index for Proximity to TSDFs	98	85	84
EJ Index for Proximity to Major Direct Dischargers	98	97	95



This report shows the values for environmental and demographic indicators and EJSCREEN indexes. It shows environmental and demographic raw data (e.g., the estimated concentration of ozone in the air), and also shows what percentile each raw data value represents. These percentiles provide perspective on how the selected block group or buffer area compares to the entire state, EPA region, or nation. For example, if a given location is at the 95th percentile nationwide, this means that only 5 percent of the US population has a higher block group value than the average person in the location being analyzed. The years for which the data are available, and the methods used, vary across these indicators. Important caveats and uncertainties apply to this screening-level information, so it is essential to understand the limitations on appropriate interpretations and applications of these indicators. Please see EJSCREEN documentation for discussion of these issues before using reports.

EJSCREEN Report (Version 2016)



0.25 mile Ring around the Corridor, WEST VIRGINIA, EPA Region 3

Approximate Population: 4,420

Input Area (sq. miles): 0.77

Beechurst Ave Improvements

Selected Variables	Value	State Avg.	%ile in State	EPA Region Avg.	%ile in EPA Region	USA Avg.	%ile in USA
Environmental Indicators							
Particulate Matter (PM 2.5 in $\mu\text{g}/\text{m}^3$)	9.58	9.51	49	9.84	37	9.32	52
Ozone (ppb)	50.9	50.1	67	49.8	60	47.4	67
NATA* Diesel PM ($\mu\text{g}/\text{m}^3$)	1.11	0.439	95	0.918	70-80th	0.937	70-80th
NATA* Cancer Risk (lifetime risk per million)	42	34	83	42	50-60th	40	50-60th
NATA* Respiratory Hazard Index	2	1.3	88	1.8	60-70th	1.8	60-70th
Traffic Proximity and Volume (daily traffic count/distance to road)	310	58	96	350	73	590	70
Lead Paint Indicator (% Pre-1960 Housing)	0.34	0.35	56	0.37	55	0.3	64
NPL Proximity (site count/km distance)	0.24	0.074	94	0.15	86	0.13	88
RMP Proximity (facility count/km distance)	0.82	0.29	90	0.35	88	0.43	85
TSDF Proximity (facility count/km distance)	0.28	0.076	94	0.11	92	0.072	96
Water Discharger Proximity (facility count/km distance)	3.6	0.42	99	0.37	99	0.31	99
Demographic Indicators							
Demographic Index	46%	24%	96	30%	79	36%	70
Minority Population	17%	7%	88	31%	45	37%	35
Low Income Population	82%	40%	98	29%	98	35%	97
Linguistically Isolated Population	1%	0%	89	2%	57	5%	46
Population With Less Than High School Education	8%	16%	21	12%	41	14%	38
Population Under 5 years of age	1%	6%	6	6%	5	6%	5
Population over 64 years of age	3%	17%	1	15%	4	14%	4

* The National-Scale Air Toxics Assessment (NATA) is EPA's ongoing, comprehensive evaluation of air toxics in the United States. EPA developed the NATA to prioritize air toxics, emission sources, and locations of interest for further study. It is important to remember that NATA provides broad estimates of health risks over geographic areas of the country, not definitive risks to specific individuals or locations. More information on the NATA analysis can be found at: <https://www.epa.gov/national-air-toxics-assessment>.

For additional information, see: www.epa.gov/environmentaljustice

EJSCREEN is a screening tool for pre-decisional use only. It can help identify areas that may warrant additional consideration, analysis, or outreach. It does not provide a basis for decision-making, but it may help identify potential areas of EJ concern. Users should keep in mind that screening tools are subject to substantial uncertainty in their demographic and environmental data, particularly when looking at small geographic areas. Important caveats and uncertainties apply to this screening-level information, so it is essential to understand the limitations on appropriate interpretations and applications of these indicators. Please see EJSCREEN documentation for discussion of these issues before using reports. This screening tool does not provide data on every environmental impact and demographic factor that may be relevant to a particular location. EJSCREEN outputs should be supplemented with additional information and local knowledge before taking any action to address potential EJ concerns.

Location: User-specified linear location
Ring (buffer): 0.25-mile radius
Description: Beechurst Ave Improvements

Summary of ACS Estimates		2010 - 2014	
Population		4,420	
Population Density (per sq. mile)		7,662	
Minority Population		737	
% Minority		17%	
Households		1,421	
Housing Units		1,977	
Housing Units Built Before 1950		592	
Per Capita Income		14,996	
Land Area (sq. miles) (Source: SF1)		0.58	
% Land Area		99%	
Water Area (sq. miles) (Source: SF1)		0.00	
% Water Area		1%	
	2010 - 2014 ACS Estimates	Percent	MOE (±)
Population by Race			
Total	4,420	100%	543
Population Reporting One Race	4,297	97%	883
White	3,746	85%	520
Black	138	3%	95
American Indian	1	0%	21
Asian	363	8%	178
Pacific Islander	1	0%	18
Some Other Race	48	1%	51
Population Reporting Two or More Races	123	3%	80
Total Hispanic Population	78	2%	124
Total Non-Hispanic Population	4,342		
White Alone	3,683	83%	464
Black Alone	137	3%	96
American Indian Alone	1	0%	21
Non-Hispanic Asian Alone	363	8%	178
Pacific Islander Alone	1	0%	18
Other Race Alone	46	1%	51
Two or More Races Alone	111	3%	78
Population by Sex			
Male	2,458	56%	437
Female	1,962	44%	398
Population by Age			
Age 0-4	33	1%	72
Age 0-17	156	4%	103
Age 18+	4,264	96%	441
Age 65+	122	3%	94

Data Note: Detail may not sum to totals due to rounding. Hispanic population can be of any race. N/A means not available.

Source: U.S. Census Bureau, American Community Survey (ACS) 2010 - 2014.

EJSCREEN ACS Summary Report



Location: User-specified linear location

Ring (buffer): 0.25-mile radius

Description: Beechurst Ave Improvements

	2010 - 2014 ACS Estimates	Percent	MOE (±)
Population by Language Spoken at Home*			
Total (persons age 5 and above)	4,387	100%	543
English	N/A	N/A	N/A
Spanish	N/A	N/A	N/A
French	N/A	N/A	N/A
French Creole	N/A	N/A	N/A
Italian	N/A	N/A	N/A
Portuguese	N/A	N/A	N/A
German	N/A	N/A	N/A
Yiddish	N/A	N/A	N/A
Other West Germanic	N/A	N/A	N/A
Scandinavian	N/A	N/A	N/A
Greek	N/A	N/A	N/A
Russian	N/A	N/A	N/A
Polish	N/A	N/A	N/A
Serbo-Croatian	N/A	N/A	N/A
Other Slavic	N/A	N/A	N/A
Armenian	N/A	N/A	N/A
Persian	N/A	N/A	N/A
Gujarathi	N/A	N/A	N/A
Hindi	N/A	N/A	N/A
Urdu	N/A	N/A	N/A
Other Indic	N/A	N/A	N/A
Other Indo-European	N/A	N/A	N/A
Chinese	N/A	N/A	N/A
Japanese	N/A	N/A	N/A
Korean	N/A	N/A	N/A
Mon-Khmer, Cambodian	N/A	N/A	N/A
Hmong	N/A	N/A	N/A
Thai	N/A	N/A	N/A
Laotian	N/A	N/A	N/A
Vietnamese	N/A	N/A	N/A
Other Asian	N/A	N/A	N/A
Tagalog	N/A	N/A	N/A
Other Pacific Island	N/A	N/A	N/A
Navajo	N/A	N/A	N/A
Other Native American	N/A	N/A	N/A
Hungarian	N/A	N/A	N/A
Arabic	N/A	N/A	N/A
Hebrew	N/A	N/A	N/A
African	N/A	N/A	N/A
Other and non-specified	N/A	N/A	N/A
Total Non-English	N/A	N/A	N/A

Data Note: Detail may not sum to totals due to rounding. Hispanic population can be of any race. N/A means not available. **Source:** U.S. Census Bureau, American Community Survey (ACS) 2010 - 2014.

*Population by Language Spoken at Home is available at the census tract summary level and up.

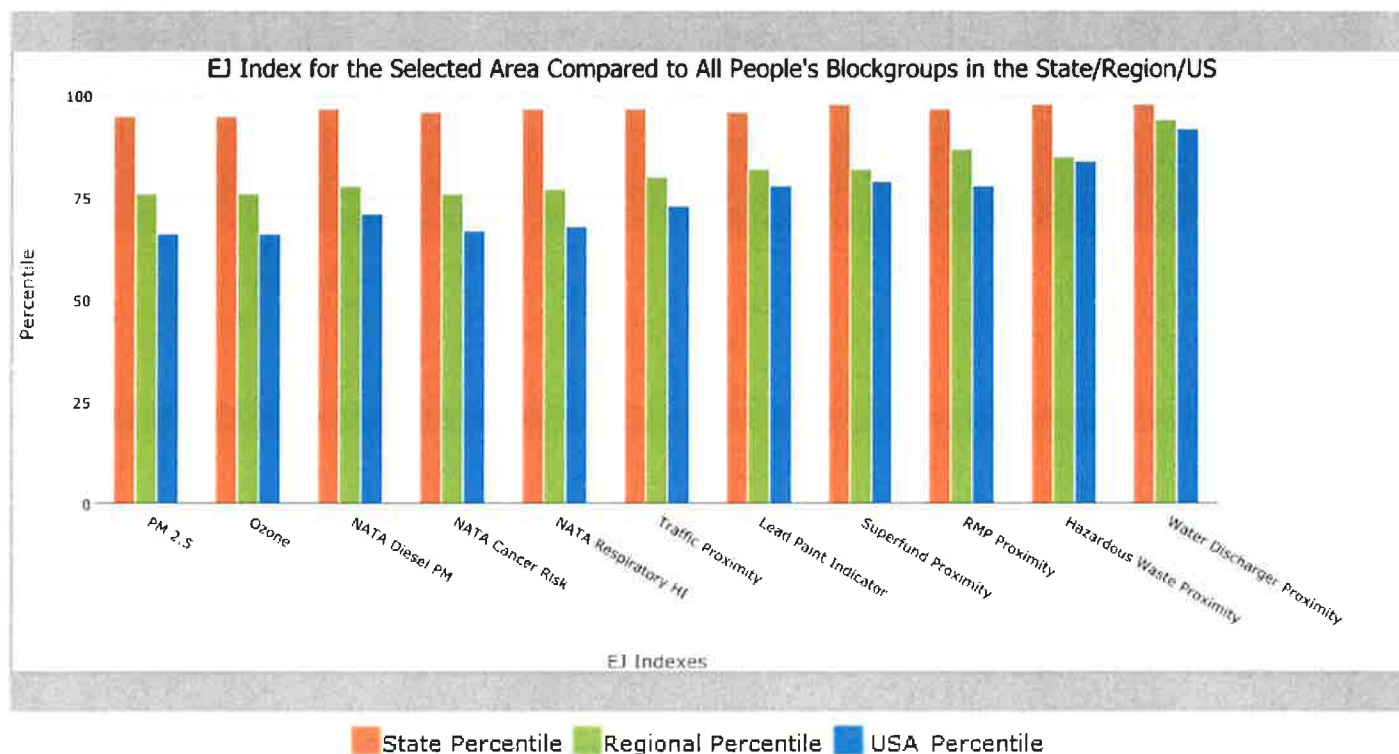
0.25 mile Ring around the Area, WEST VIRGINIA, EPA Region 3

Approximate Population: 4,686

Input Area (sq. miles): 0.60

Downtown MGT

Selected Variables	State Percentile	EPA Region Percentile	USA Percentile
EJ Indexes			
EJ Index for PM2.5	95	76	66
EJ Index for Ozone	95	76	66
EJ Index for NATA* Diesel PM	97	78	71
EJ Index for NATA* Air Toxics Cancer Risk	96	76	67
EJ Index for NATA* Respiratory Hazard Index	97	77	68
EJ Index for Traffic Proximity and Volume	97	80	73
EJ Index for Lead Paint Indicator	96	82	78
EJ Index for Proximity to NPL sites	98	82	79
EJ Index for Proximity to RMP sites	97	87	78
EJ Index for Proximity to TSDFs	98	85	84
EJ Index for Proximity to Major Direct Dischargers	98	94	92



This report shows the values for environmental and demographic indicators and EJSCREEN indexes. It shows environmental and demographic raw data (e.g., the estimated concentration of ozone in the air), and also shows what percentile each raw data value represents. These percentiles provide perspective on how the selected block group or buffer area compares to the entire state, EPA region, or nation. For example, if a given location is at the 95th percentile nationwide, this means that only 5 percent of the US population has a higher block group value than the average person in the location being analyzed. The years for which the data are available, and the methods used, vary across these indicators. Important caveats and uncertainties apply to this screening-level information, so it is essential to understand the limitations on appropriate interpretations and applications of these indicators. Please see EJSCREEN documentation for discussion of these issues before using reports.

EJSCREEN Report (Version 2016)



0.25 mile Ring around the Area, WEST VIRGINIA, EPA Region 3

Approximate Population: 4,686

Input Area (sq. miles): 0.60

Downtown MGT

Selected Variables	Value	State Avg.	%ile in State	EPA Region Avg.	%ile in EPA Region	USA Avg.	%ile in USA
Environmental Indicators							
Particulate Matter (PM 2.5 in $\mu\text{g}/\text{m}^3$)	9.57	9.51	48	9.84	37	9.32	52
Ozone (ppb)	50.9	50.1	66	49.8	60	47.4	67
NATA* Diesel PM ($\mu\text{g}/\text{m}^3$)	1.15	0.439	95	0.918	70-80th	0.937	70-80th
NATA* Cancer Risk (lifetime risk per million)	44	34	88	42	60-70th	40	60-70th
NATA* Respiratory Hazard Index	2.1	1.3	91	1.8	60-70th	1.8	70-80th
Traffic Proximity and Volume (daily traffic count/distance to road)	210	58	93	350	65	590	63
Lead Paint Indicator (% Pre-1960 Housing)	0.53	0.35	78	0.37	71	0.3	77
NPL Proximity (site count/km distance)	0.27	0.074	95	0.15	88	0.13	90
RMP Proximity (facility count/km distance)	0.99	0.29	93	0.35	90	0.43	88
TSDF Proximity (facility count/km distance)	0.32	0.076	95	0.11	94	0.072	96
Water Discharger Proximity (facility count/km distance)	1.9	0.42	96	0.37	97	0.31	98
Demographic Indicators							
Demographic Index	44%	24%	95	30%	77	36%	67
Minority Population	16%	7%	88	31%	44	37%	35
Low Income Population	73%	40%	96	29%	96	35%	94
Linguistically Isolated Population	2%	0%	93	2%	68	5%	55
Population With Less Than High School Education	8%	16%	23	12%	44	14%	40
Population Under 5 years of age	1%	6%	9	6%	7	6%	7
Population over 64 years of age	6%	17%	4	15%	13	14%	15

* The National-Scale Air Toxics Assessment (NATA) is EPA's ongoing, comprehensive evaluation of air toxics in the United States. EPA developed the NATA to prioritize air toxics, emission sources, and locations of interest for further study. It is important to remember that NATA provides broad estimates of health risks over geographic areas of the country, not definitive risks to specific individuals or locations. More information on the NATA analysis can be found at: <https://www.epa.gov/national-air-toxics-assessment>.

For additional information, see: www.epa.gov/environmentaljustice

EJSCREEN is a screening tool for pre-decisional use only. It can help identify areas that may warrant additional consideration, analysis, or outreach. It does not provide a basis for decision-making, but it may help identify potential areas of EJ concern. Users should keep in mind that screening tools are subject to substantial uncertainty in their demographic and environmental data, particularly when looking at small geographic areas. Important caveats and uncertainties apply to this screening-level information, so it is essential to understand the limitations on appropriate interpretations and applications of these indicators. Please see EJSCREEN documentation for discussion of these issues before using reports. This screening tool does not provide data on every environmental impact and demographic factor that may be relevant to a particular location. EJSCREEN outputs should be supplemented with additional information and local knowledge before taking any action to address potential EJ concerns.

Location: User-specified polygonal location

Ring (buffer): 0.25-mile radius

Description: Downtown MGT

Summary of ACS Estimates		2010 - 2014		
Population				4,686
Population Density (per sq. mile)				8,601
Minority Population				758
% Minority				16%
Households				1,338
Housing Units				1,756
Housing Units Built Before 1950				897
Per Capita Income				15,923
Land Area (sq. miles) (Source: SF1)				0.54
% Land Area				99%
Water Area (sq. miles) (Source: SF1)				0.00
% Water Area				1%
		2010 - 2014 ACS Estimates	Percent	MOE (±)
Population by Race				
Total		4,686	100%	509
Population Reporting One Race		4,607	98%	862
White		4,088	87%	458
Black		236	5%	176
American Indian		6	0%	21
Asian		233	5%	138
Pacific Islander		1	0%	18
Some Other Race		44	1%	51
Population Reporting Two or More Races		78	2%	80
Total Hispanic Population		181	4%	71
Total Non-Hispanic Population		4,505		
White Alone		3,928	84%	445
Black Alone		233	5%	176
American Indian Alone		6	0%	21
Non-Hispanic Asian Alone		233	5%	138
Pacific Islander Alone		1	0%	18
Other Race Alone		30	1%	51
Two or More Races Alone		75	2%	60
Population by Sex				
Male		2,409	51%	437
Female		2,277	49%	282
Population by Age				
Age 0-4		58	1%	72
Age 0-17		257	5%	103
Age 18+		4,428	95%	441
Age 65+		276	6%	94

Data Note: Detail may not sum to totals due to rounding. Hispanic population can be of any race. N/A means not available.

Source: U.S. Census Bureau, American Community Survey (ACS) 2010 - 2014.

Location: User-specified polygonal location

Ring (buffer): 0.25-mile radius

Description: Downtown MGT

	2010 - 2014 ACS Estimates	Percent	MOE (±)
Population by Language Spoken at Home*			
Total (persons age 5 and above)	4,627	100%	509
English	N/A	N/A	N/A
Spanish	N/A	N/A	N/A
French	N/A	N/A	N/A
French Creole	N/A	N/A	N/A
Italian	N/A	N/A	N/A
Portuguese	N/A	N/A	N/A
German	N/A	N/A	N/A
Yiddish	N/A	N/A	N/A
Other West Germanic	N/A	N/A	N/A
Scandinavian	N/A	N/A	N/A
Greek	N/A	N/A	N/A
Russian	N/A	N/A	N/A
Polish	N/A	N/A	N/A
Serbo-Croatian	N/A	N/A	N/A
Other Slavic	N/A	N/A	N/A
Armenian	N/A	N/A	N/A
Persian	N/A	N/A	N/A
Gujarathi	N/A	N/A	N/A
Hindi	N/A	N/A	N/A
Urdu	N/A	N/A	N/A
Other Indic	N/A	N/A	N/A
Other Indo-European	N/A	N/A	N/A
Chinese	N/A	N/A	N/A
Japanese	N/A	N/A	N/A
Korean	N/A	N/A	N/A
Mon-Khmer, Cambodian	N/A	N/A	N/A
Hmong	N/A	N/A	N/A
Thai	N/A	N/A	N/A
Laotian	N/A	N/A	N/A
Vietnamese	N/A	N/A	N/A
Other Asian	N/A	N/A	N/A
Tagalog	N/A	N/A	N/A
Other Pacific Island	N/A	N/A	N/A
Navajo	N/A	N/A	N/A
Other Native American	N/A	N/A	N/A
Hungarian	N/A	N/A	N/A
Arabic	N/A	N/A	N/A
Hebrew	N/A	N/A	N/A
African	N/A	N/A	N/A
Other and non-specified	N/A	N/A	N/A
Total Non-English	N/A	N/A	N/A

Data Note: Detail may not sum to totals due to rounding. Hispanic population can be of any race. N/A means not available. **Source:** U.S. Census Bureau, American Community Survey (ACS) 2010 - 2014.

*Population by Language Spoken at Home is available at the census tract summary level and up.

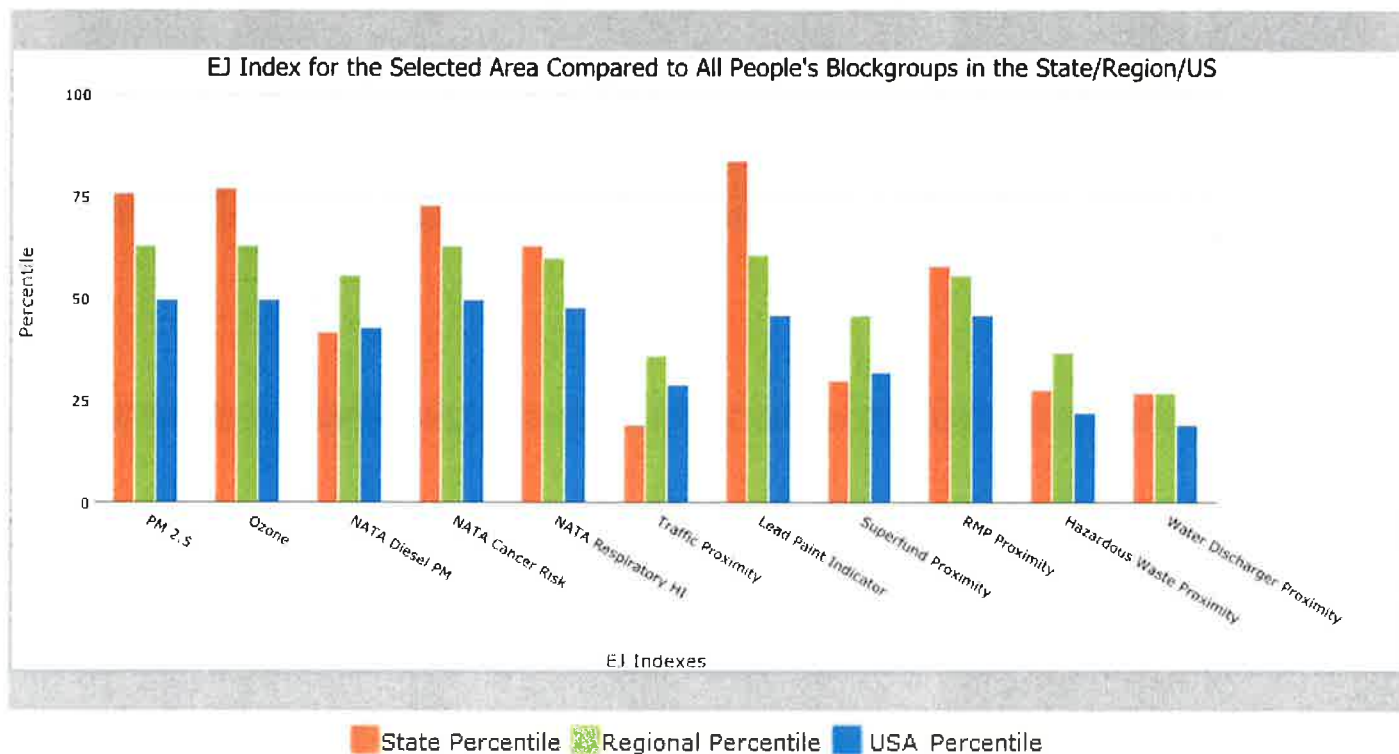
0.25 mile Ring around the Corridor, WEST VIRGINIA, EPA Region 3

Approximate Population: 2,503

Input Area (sq. miles): 1.11

West Run Rd Improvements-Western Section

Selected Variables	State Percentile	EPA Region Percentile	USA Percentile
EJ Indexes			
EJ Index for PM2.5	76	63	50
EJ Index for Ozone	77	63	50
EJ Index for NATA* Diesel PM	42	56	43
EJ Index for NATA* Air Toxics Cancer Risk	73	63	50
EJ Index for NATA* Respiratory Hazard Index	63	60	48
EJ Index for Traffic Proximity and Volume	19	36	29
EJ Index for Lead Paint Indicator	84	61	46
EJ Index for Proximity to NPL sites	30	46	32
EJ Index for Proximity to RMP sites	58	56	46
EJ Index for Proximity to TSDFs	28	37	22
EJ Index for Proximity to Major Direct Dischargers	27	27	19



This report shows the values for environmental and demographic indicators and EJSCREEN indexes. It shows environmental and demographic raw data (e.g., the estimated concentration of ozone in the air), and also shows what percentile each raw data value represents. These percentiles provide perspective on how the selected block group or buffer area compares to the entire state, EPA region, or nation. For example, if a given location is at the 95th percentile nationwide, this means that only 5 percent of the US population has a higher block group value than the average person in the location being analyzed. The years for which the data are available, and the methods used, vary across these indicators. Important caveats and uncertainties apply to this screening-level information, so it is essential to understand the limitations on appropriate interpretations and applications of these indicators. Please see EJSCREEN documentation for discussion of these issues before using reports.

EJSCREEN Report (Version 2016)



0.25 mile Ring around the Corridor, WEST VIRGINIA, EPA Region 3

Approximate Population: 2,503

Input Area (sq. miles): 1.11

West Run Rd Improvements-Western Section

Selected Variables	Value	State Avg.	%ile in State	EPA Region Avg.	%ile in EPA Region	USA Avg.	%ile in USA
Environmental Indicators							
Particulate Matter (PM 2.5 in $\mu\text{g}/\text{m}^3$)	9.65	9.51	52	9.84	39	9.32	54
Ozone (ppb)	50.9	50.1	68	49.8	60	47.4	68
NATA* Diesel PM ($\mu\text{g}/\text{m}^3$)	0.537	0.439	73	0.918	<50th	0.937	<50th
NATA* Cancer Risk (lifetime risk per million)	32	34	50	42	<50th	40	<50th
NATA* Respiratory Hazard Index	1.4	1.3	63	1.8	<50th	1.8	<50th
Traffic Proximity and Volume (daily traffic count/distance to road)	90	58	81	350	51	590	49
Lead Paint Indicator (% Pre-1960 Housing)	0.037	0.35	3	0.37	13	0.3	22
NPL Proximity (site count/km distance)	0.13	0.074	87	0.15	70	0.13	75
RMP Proximity (facility count/km distance)	0.15	0.29	60	0.35	50	0.43	44
TSDF Proximity (facility count/km distance)	0.14	0.076	84	0.11	79	0.072	88
Water Discharger Proximity (facility count/km distance)	0.8	0.42	85	0.37	87	0.31	91
Demographic Indicators							
Demographic Index	32%	24%	83	30%	65	36%	53
Minority Population	21%	7%	92	31%	51	37%	42
Low Income Population	43%	40%	60	29%	77	35%	67
Linguistically Isolated Population	2%	0%	92	2%	65	5%	53
Population With Less Than High School Education	5%	16%	13	12%	30	14%	28
Population Under 5 years of age	5%	6%	46	6%	42	6%	38
Population over 64 years of age	11%	17%	18	15%	34	14%	41

* The National-Scale Air Toxics Assessment (NATA) is EPA's ongoing, comprehensive evaluation of air toxics in the United States. EPA developed the NATA to prioritize air toxics, emission sources, and locations of interest for further study. It is important to remember that NATA provides broad estimates of health risks over geographic areas of the country, not definitive risks to specific individuals or locations. More information on the NATA analysis can be found at: <https://www.epa.gov/national-air-toxics-assessment>.

For additional information, see: www.epa.gov/environmentaljustice

EJSCREEN is a screening tool for pre-decisional use only. It can help identify areas that may warrant additional consideration, analysis, or outreach. It does not provide a basis for decision-making, but it may help identify potential areas of EJ concern. Users should keep in mind that screening tools are subject to substantial uncertainty in their demographic and environmental data, particularly when looking at small geographic areas. Important caveats and uncertainties apply to this screening-level information, so it is essential to understand the limitations on appropriate interpretations and applications of these indicators. Please see EJSCREEN documentation for discussion of these issues before using reports. This screening tool does not provide data on every environmental impact and demographic factor that may be relevant to a particular location. EJSCREEN outputs should be supplemented with additional information and local knowledge before taking any action to address potential EJ concerns.

Location: User-specified linear location

Ring (buffer): 0.25-mile radius

Description: West Run Rd Improvements-Western Section

Summary of ACS Estimates		2010 - 2014		
Population		2,503		
Population Density (per sq. mile)		3,865		
Minority Population		533		
% Minority		21%		
Households		996		
Housing Units		1,185		
Housing Units Built Before 1950		24		
Per Capita Income		30,462		
Land Area (sq. miles) (Source: SF1)		0.65		
% Land Area		99%		
Water Area (sq. miles) (Source: SF1)		0.00		
% Water Area		1%		
		2010 - 2014 ACS Estimates	Percent	MOE (±)
Population by Race				
Total		2,503	100%	480
Population Reporting One Race		2,427	97%	1,020
White		2,053	82%	440
Black		81	3%	157
American Indian		8	0%	30
Asian		283	11%	341
Pacific Islander		0	0%	11
Some Other Race		2	0%	41
Population Reporting Two or More Races		76	3%	87
Total Hispanic Population		90	4%	150
Total Non-Hispanic Population		2,413		
White Alone		1,970	79%	471
Black Alone		77	3%	157
American Indian Alone		8	0%	30
Non-Hispanic Asian Alone		283	11%	341
Pacific Islander Alone		0	0%	11
Other Race Alone		0	0%	41
Two or More Races Alone		75	3%	87
Population by Sex				
Male		1,207	48%	388
Female		1,296	52%	287
Population by Age				
Age 0-4		122	5%	87
Age 0-17		344	14%	165
Age 18+		2,159	86%	461
Age 65+		268	11%	126

Data Note: Detail may not sum to totals due to rounding. Hispanic population can be of any race. N/A means not available.

Source: U.S. Census Bureau, American Community Survey (ACS) 2010 - 2014.

Location: User-specified linear location

Ring (buffer): 0.25-mile radius

Description: West Run Rd Improvements-Western Section

	2010 - 2014 ACS Estimates	Percent	MOE (±)
Population by Language Spoken at Home*			
Total (persons age 5 and above)	2,382	100%	469
English	N/A	N/A	N/A
Spanish	N/A	N/A	N/A
French	N/A	N/A	N/A
French Creole	N/A	N/A	N/A
Italian	N/A	N/A	N/A
Portuguese	N/A	N/A	N/A
German	N/A	N/A	N/A
Yiddish	N/A	N/A	N/A
Other West Germanic	N/A	N/A	N/A
Scandinavian	N/A	N/A	N/A
Greek	N/A	N/A	N/A
Russian	N/A	N/A	N/A
Polish	N/A	N/A	N/A
Serbo-Croatian	N/A	N/A	N/A
Other Slavic	N/A	N/A	N/A
Armenian	N/A	N/A	N/A
Persian	N/A	N/A	N/A
Gujarathi	N/A	N/A	N/A
Hindi	N/A	N/A	N/A
Urdu	N/A	N/A	N/A
Other Indic	N/A	N/A	N/A
Other Indo-European	N/A	N/A	N/A
Chinese	N/A	N/A	N/A
Japanese	N/A	N/A	N/A
Korean	N/A	N/A	N/A
Mon-Khmer, Cambodian	N/A	N/A	N/A
Hmong	N/A	N/A	N/A
Thai	N/A	N/A	N/A
Laotian	N/A	N/A	N/A
Vietnamese	N/A	N/A	N/A
Other Asian	N/A	N/A	N/A
Tagalog	N/A	N/A	N/A
Other Pacific Island	N/A	N/A	N/A
Navajo	N/A	N/A	N/A
Other Native American	N/A	N/A	N/A
Hungarian	N/A	N/A	N/A
Arabic	N/A	N/A	N/A
Hebrew	N/A	N/A	N/A
African	N/A	N/A	N/A
Other and non-specified	N/A	N/A	N/A
Total Non-English	N/A	N/A	N/A

Data Note: Detail may not sum to totals due to rounding. Hispanic population can be of any race. N/A means not available. **Source:** U.S. Census Bureau, American Community Survey (ACS) 2010 - 2014.

*Population by Language Spoken at Home is available at the census tract summary level and up.

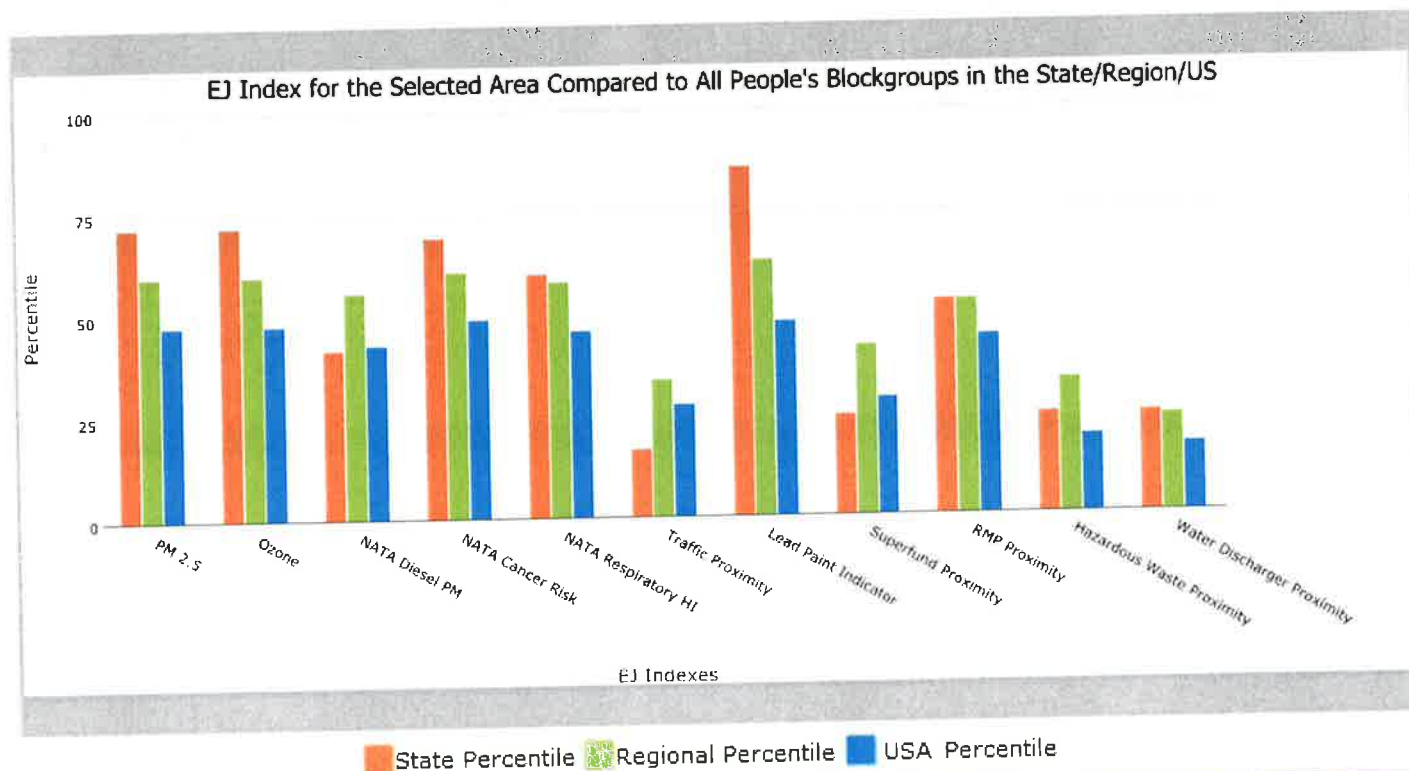
0.25 mile Ring around the Corridor, WEST VIRGINIA, EPA Region 3

Approximate Population: 1,493

Input Area (sq. miles): 0.61

West Run Rd Improvements Eastern Section

Selected Variables	State Percentile	EPA Region Percentile	USA Percentile
EJ Indexes			
EJ Index for PM2.5	72	60	48
EJ Index for Ozone	72	60	48
EJ Index for NATA* Diesel PM	42	56	43
EJ Index for NATA* Air Toxics Cancer Risk	69	61	49
EJ Index for NATA* Respiratory Hazard Index	60	58	46
EJ Index for Traffic Proximity and Volume	17	34	28
EJ Index for Lead Paint Indicator	86	63	48
EJ Index for Proximity to NPL sites	25	42	29
EJ Index for Proximity to RMP sites	53	53	44
EJ Index for Proximity to TSDFs	25	33	19
EJ Index for Proximity to Major Direct Dischargers	25	24	17



This report shows the values for environmental and demographic indicators and EJSCREEN indexes. It shows environmental and demographic raw data (e.g., the estimated concentration of ozone in the air), and also shows what percentile each raw data value represents. These percentiles provide perspective on how the selected block group or buffer area compares to the entire state, EPA region, or nation. For example, if a given location is at the 95th percentile nationwide, this means that only 5 percent of the US population has a higher block group value than the average person in the location being analyzed. The years for which the data are available, and the methods used, vary across these indicators. Important caveats and uncertainties apply to this screening-level information, so it is essential to understand the limitations on appropriate interpretations and applications of these indicators. Please see EJSCREEN documentation for discussion of these issues before using reports.

EJSCREEN Report (Version 2016)



0.25 mile Ring around the Corridor, WEST VIRGINIA, EPA Region 3

Approximate Population: 1,493

Input Area (sq. miles): 0.61

West Run Rd Improvements Eastern Section

Selected Variables	Value	State Avg.	%ile in State	EPA Region Avg.	%ile in EPA Region	USA Avg.	%ile in USA
Environmental Indicators							
Particulate Matter (PM 2.5 in $\mu\text{g}/\text{m}^3$)	9.6	9.51	50	9.84	38	9.32	53
Ozone (ppb)	50.9	50.1	68	49.8	60	47.4	68
NATA* Diesel PM ($\mu\text{g}/\text{m}^3$)	0.535	0.439	73	0.918	<50th	0.937	<50th
NATA* Cancer Risk (lifetime risk per million)	32	34	47	42	<50th	40	<50th
NATA* Respiratory Hazard Index	1.4	1.3	61	1.8	<50th	1.8	<50th
Traffic Proximity and Volume (daily traffic count/distance to road)	100	58	84	350	54	590	51
Lead Paint Indicator (% Pre-1960 Housing)	0.052	0.35	5	0.37	16	0.3	26
NPL Proximity (site count/km distance)	0.13	0.074	87	0.15	70	0.13	75
RMP Proximity (facility count/km distance)	0.15	0.29	60	0.35	51	0.43	44
TSDF Proximity (facility count/km distance)	0.14	0.076	84	0.11	79	0.072	88
Water Discharger Proximity (facility count/km distance)	0.68	0.42	82	0.37	85	0.31	89
Demographic Indicators							
Demographic Index	32%	24%	83	30%	65	36%	53
Minority Population	17%	7%	89	31%	46	37%	36
Low Income Population	47%	40%	68	29%	81	35%	71
Linguistically Isolated Population	0%	0%	87	2%	55	5%	44
Population With Less Than High School Education	3%	16%	5	12%	15	14%	14
Population Under 5 years of age	3%	6%	26	6%	23	6%	21
Population over 64 years of age	6%	17%	4	15%	14	14%	16

* The National-Scale Air Toxics Assessment (NATA) is EPA's ongoing, comprehensive evaluation of air toxics in the United States. EPA developed the NATA to prioritize air toxics, emission sources, and locations of interest for further study. It is important to remember that NATA provides broad estimates of health risks over geographic areas of the country, not definitive risks to specific individuals or locations. More information on the NATA analysis can be found at: <https://www.epa.gov/national-air-toxics-assessment>.

For additional information, see: www.epa.gov/environmentaljustice

EJSCREEN is a screening tool for pre-decisional use only. It can help identify areas that may warrant additional consideration, analysis, or outreach. It does not provide a basis for decision-making, but it may help identify potential areas of EJ concern. Users should keep in mind that screening tools are subject to substantial uncertainty in their demographic and environmental data, particularly when looking at small geographic areas. Important caveats and uncertainties apply to this screening-level information, so it is essential to understand the limitations on appropriate interpretations and applications of these indicators. Please see EJSCREEN documentation for discussion of these issues before using reports. This screening tool does not provide data on every environmental impact and demographic factor that may be relevant to a particular location. EJSCREEN outputs should be supplemented with additional information and local knowledge before taking any action to address potential EJ concerns.

Location: User-specified linear location

Ring (buffer): 0.25-mile radius

Description: West Run Rd Improvements Eastern Section

Summary of ACS Estimates		2010 - 2014		
Population				1,493
Population Density (per sq. mile)				3,950
Minority Population				255
% Minority				17%
Households				580
Housing Units				765
Housing Units Built Before 1950				38
Per Capita Income				25,332
Land Area (sq. miles) (Source: SF1)				0.38
% Land Area				99%
Water Area (sq. miles) (Source: SF1)				0.00
% Water Area				1%
		2010 - 2014 ACS Estimates	Percent	MOE (±)
Population by Race				
Total		1,493	100%	480
Population Reporting One Race		1,449	97%	801
White		1,273	85%	440
Black		116	8%	157
American Indian		0	0%	11
Asian		44	3%	141
Pacific Islander		0	0%	11
Some Other Race		17	1%	41
Population Reporting Two or More Races		43	3%	87
Total Hispanic Population		38	3%	124
Total Non-Hispanic Population		1,454		
White Alone		1,238	83%	471
Black Alone		116	8%	157
American Indian Alone		0	0%	11
Non-Hispanic Asian Alone		44	3%	141
Pacific Islander Alone		0	0%	11
Other Race Alone		17	1%	41
Two or More Races Alone		40	3%	87
Population by Sex				
Male		691	46%	388
Female		802	54%	287
Population by Age				
Age 0-4		48	3%	87
Age 0-17		148	10%	133
Age 18+		1,345	90%	461
Age 65+		89	6%	93

Data Note: Detail may not sum to totals due to rounding. Hispanic population can be of any race. N/A means not available.

Source: U.S. Census Bureau, American Community Survey (ACS) 2010 - 2014.

Location: User-specified linear location

Ring (buffer): 0.25-mile radius

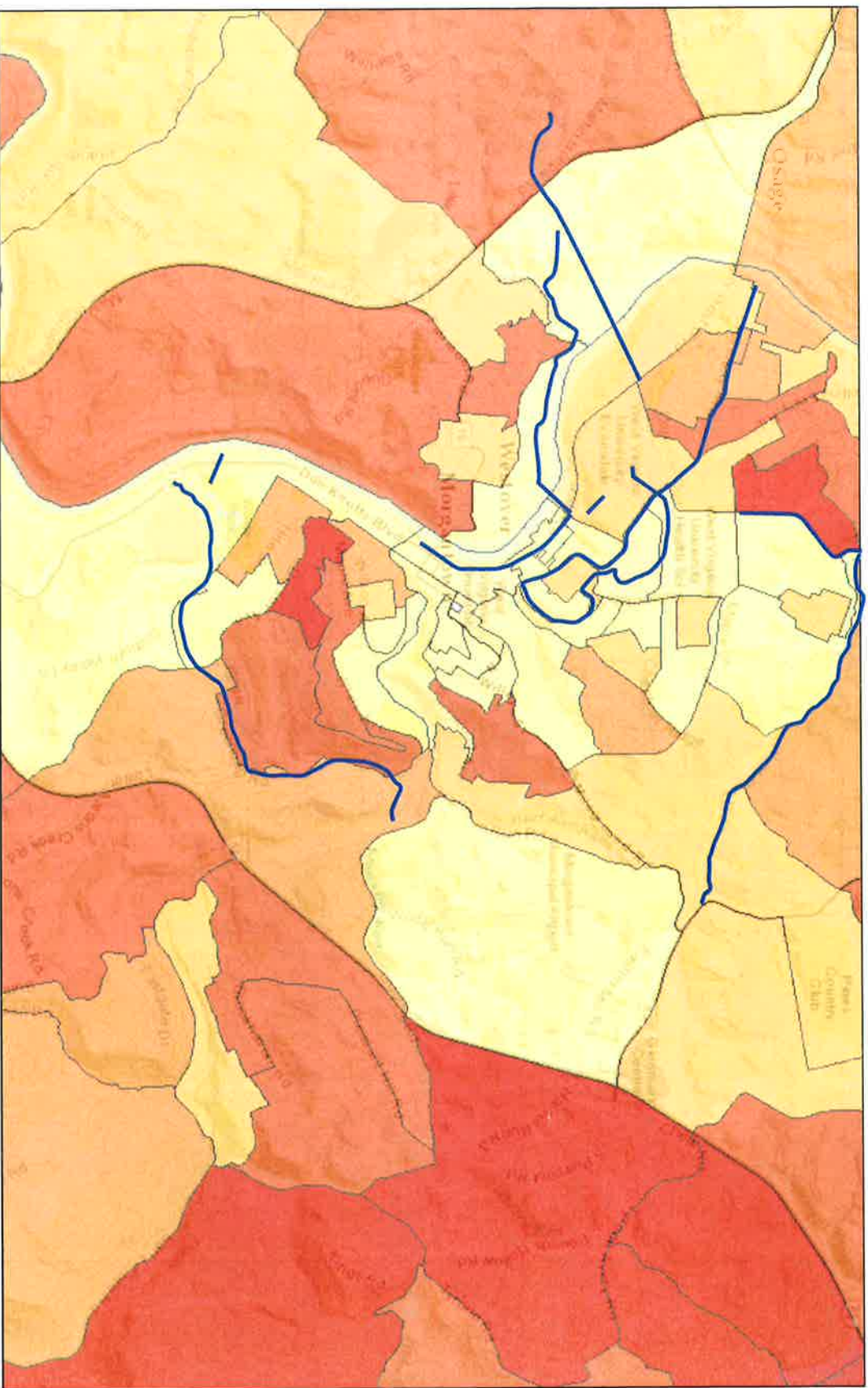
Description: West Run Rd Improvements Eastern Section

	2010 - 2014 ACS Estimates	Percent	MOE (±)
Population by Language Spoken at Home*			
Total (persons age 5 and above)	1,445	100%	469
English	N/A	N/A	N/A
Spanish	N/A	N/A	N/A
French	N/A	N/A	N/A
French Creole	N/A	N/A	N/A
Italian	N/A	N/A	N/A
Portuguese	N/A	N/A	N/A
German	N/A	N/A	N/A
Yiddish	N/A	N/A	N/A
Other West Germanic	N/A	N/A	N/A
Scandinavian	N/A	N/A	N/A
Greek	N/A	N/A	N/A
Russian	N/A	N/A	N/A
Polish	N/A	N/A	N/A
Serbo-Croatian	N/A	N/A	N/A
Other Slavic	N/A	N/A	N/A
Armenian	N/A	N/A	N/A
Persian	N/A	N/A	N/A
Gujarathi	N/A	N/A	N/A
Hindi	N/A	N/A	N/A
Urdu	N/A	N/A	N/A
Other Indic	N/A	N/A	N/A
Other Indo-European	N/A	N/A	N/A
Chinese	N/A	N/A	N/A
Japanese	N/A	N/A	N/A
Korean	N/A	N/A	N/A
Mon-Khmer, Cambodian	N/A	N/A	N/A
Hmong	N/A	N/A	N/A
Thai	N/A	N/A	N/A
Laotian	N/A	N/A	N/A
Vietnamese	N/A	N/A	N/A
Other Asian	N/A	N/A	N/A
Tagalog	N/A	N/A	N/A
Other Pacific Island	N/A	N/A	N/A
Navajo	N/A	N/A	N/A
Other Native American	N/A	N/A	N/A
Hungarian	N/A	N/A	N/A
Arabic	N/A	N/A	N/A
Hebrew	N/A	N/A	N/A
African	N/A	N/A	N/A
Other and non-specified	N/A	N/A	N/A
Total Non-English	N/A	N/A	N/A

Data Note: Detail may not sum to totals due to rounding. Hispanic population can be of any race. N/A means not available. **Source:** U.S. Census Bureau, American Community Survey (ACS) 2010 - 2014.

*Population by Language Spoken at Home is available at the census tract summary level and up.

Median Household Income



July 25, 2016

by Block Group

\$2499 - 33726
\$33726 - 45651

45651 - 59145
59145 - 80673
80673 - 250001

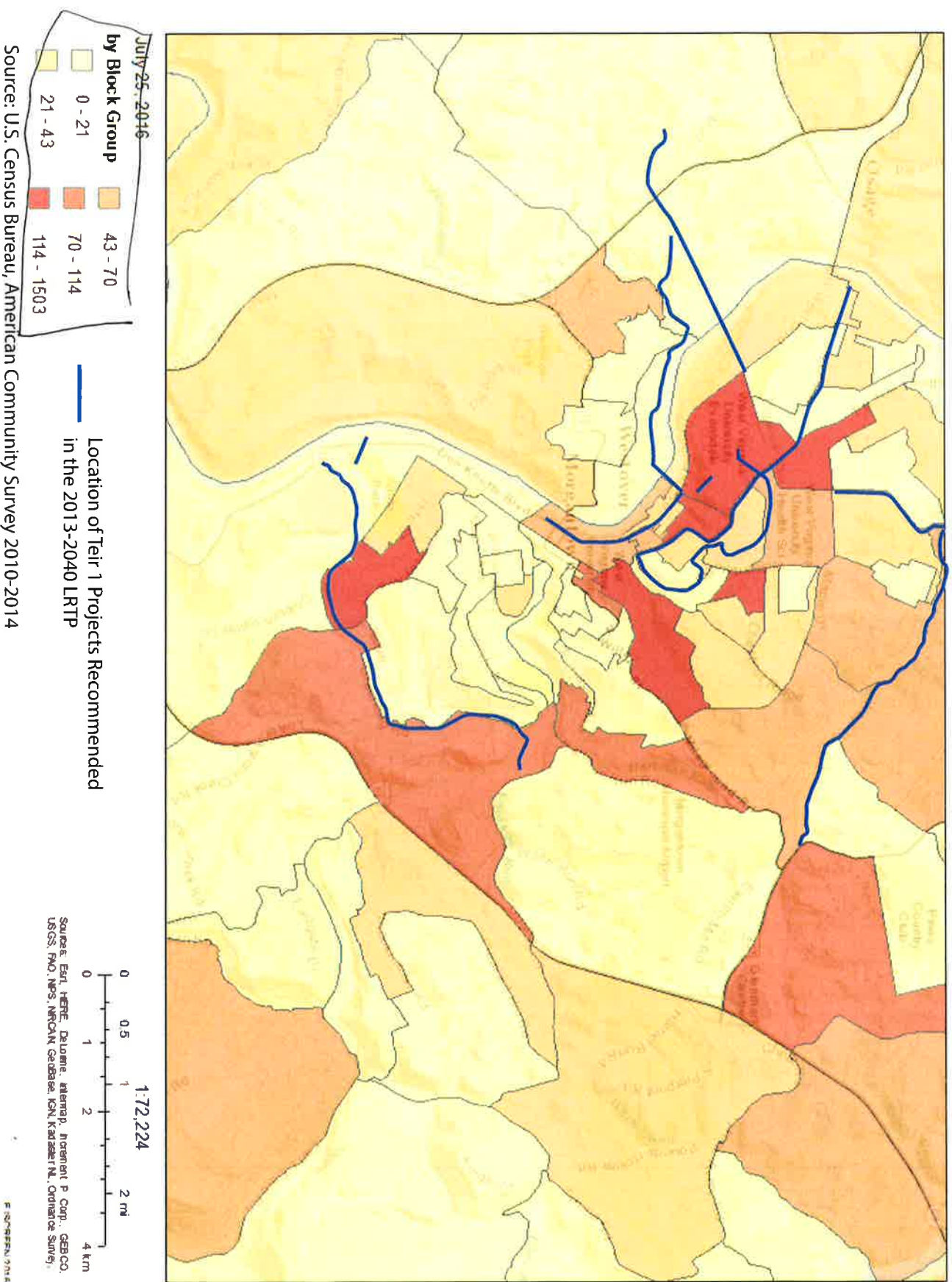
Location of Teir 1 Projects Recommended
in the 2013-2040 LRTP

0 0.5 1 2 4
0 1 2 4
1:72,224
mi
km

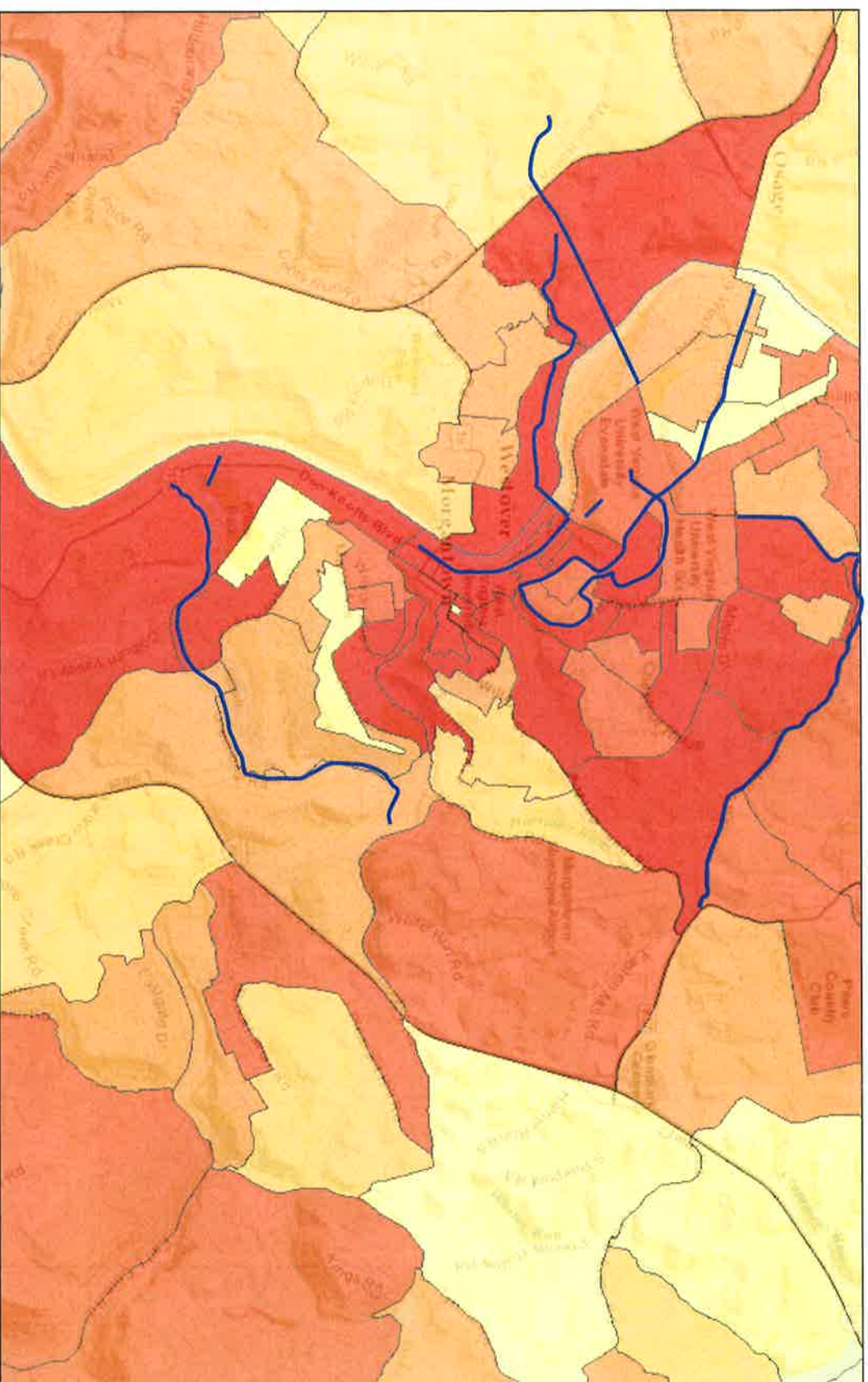
Sources: Esri, HERE, DeLorme, Intermap, Incorp. P Corp., GEBCO, USGS, FAO, NPS, NRCAN, GEBCO, IGN, Kaiser, etc., Ordnance Survey.

Source: U.S. Census Bureau, American Community Survey 2010-2014

Unemployed in Civilian Labor Force

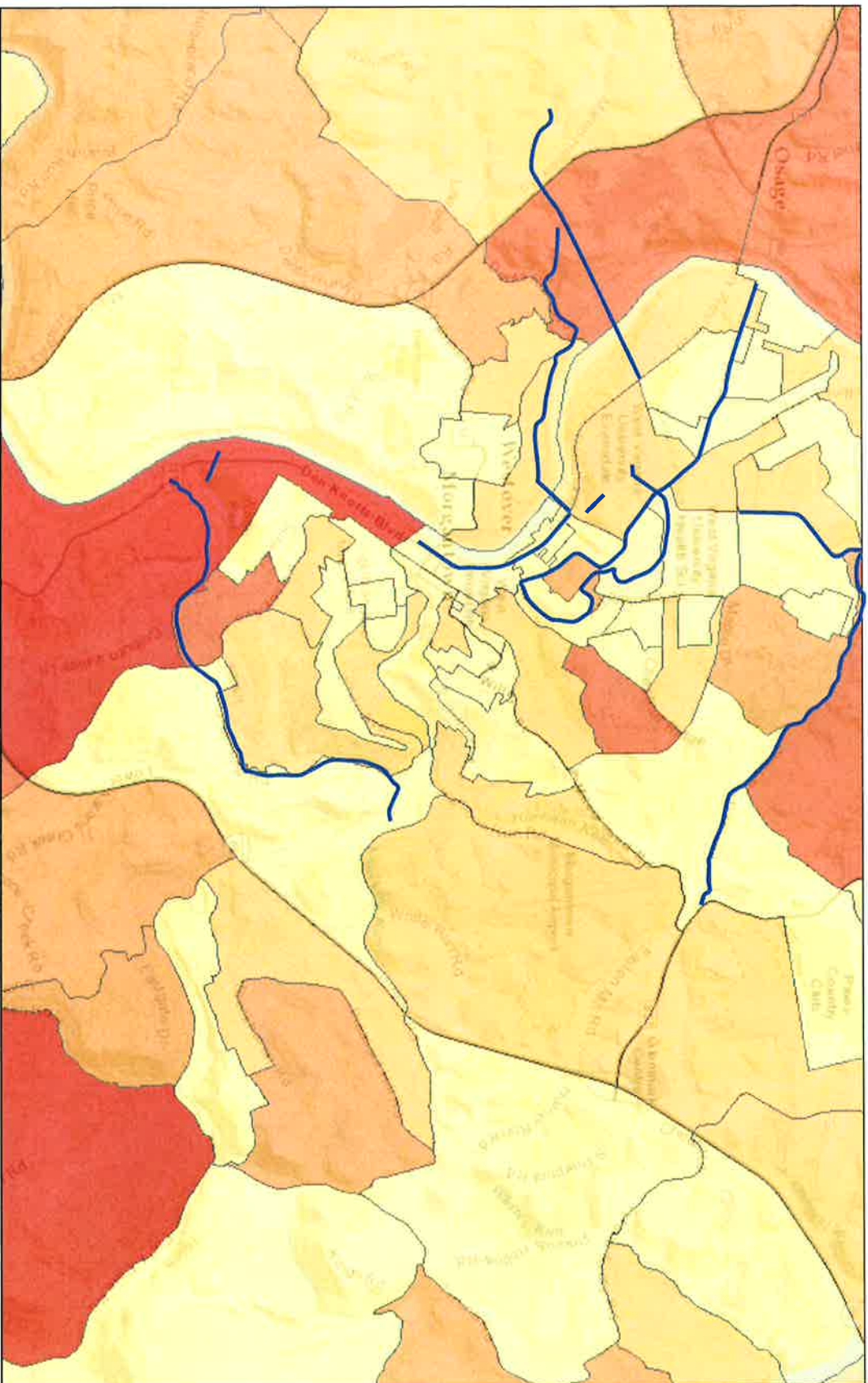


Household Income <15K



Source: U.S. Census Bureau, American Community Survey 2010-2014

Education Less than High School



Location of Teir 1 Projects Recommended in the 2013-2040 LRTP

Source: U.S. Census Bureau, American Community Survey 2010-2014

Source: Esri, HERE, DeLorme, Intermap, increment P Corp., GEBCO, USGS, FAO, NPS, NRCAN, GEBCO, IGN, Kadaster NL, Ordnance Survey,

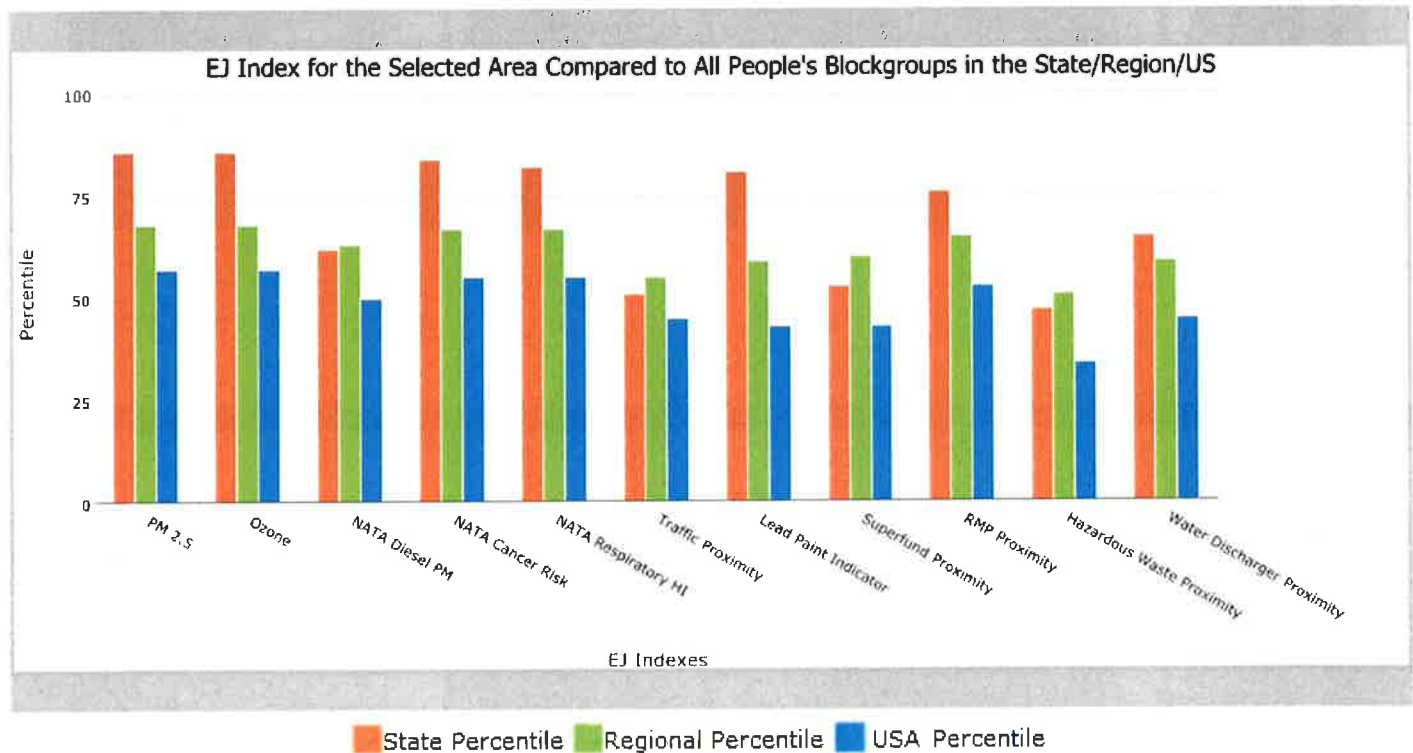
0.25 mile Ring around the Corridor, WEST VIRGINIA, EPA Region 3

Approximate Population: 4,139

Input Area (sq. miles): 0.66

Van Voorhis Rd Improvement

Selected Variables	State Percentile	EPA Region Percentile	USA Percentile
EJ Indexes			
EJ Index for PM2.5	86	68	57
EJ Index for Ozone	86	68	57
EJ Index for NATA* Diesel PM	62	63	50
EJ Index for NATA* Air Toxics Cancer Risk	84	67	55
EJ Index for NATA* Respiratory Hazard Index	82	67	55
EJ Index for Traffic Proximity and Volume	51	55	45
EJ Index for Lead Paint Indicator	81	59	43
EJ Index for Proximity to NPL sites	53	60	43
EJ Index for Proximity to RMP sites	76	65	53
EJ Index for Proximity to TSDFs	47	51	34
EJ Index for Proximity to Major Direct Dischargers	65	59	45



This report shows the values for environmental and demographic indicators and EJSCREEN indexes. It shows environmental and demographic raw data (e.g., the estimated concentration of ozone in the air), and also shows what percentile each raw data value represents. These percentiles provide perspective on how the selected block group or buffer area compares to the entire state, EPA region, or nation. For example, if a given location is at the 95th percentile nationwide, this means that only 5 percent of the US population has a higher block group value than the average person in the location being analyzed. The years for which the data are available, and the methods used, vary across these indicators. Important caveats and uncertainties apply to this screening-level information, so it is essential to understand the limitations on appropriate interpretations and applications of these indicators. Please see EJSCREEN documentation for discussion of these issues before using reports.

EJSCREEN Report (Version 2016)



0.25 mile Ring around the Corridor, WEST VIRGINIA, EPA Region 3

Approximate Population: 4,139

Input Area (sq. miles): 0.66

Van Voorhis Rd Improvement

Selected Variables	Value	State Avg.	%ile in State	EPA Region Avg.	%ile in EPA Region	USA Avg.	%ile in USA
Environmental Indicators							
Particulate Matter (PM 2.5 in $\mu\text{g}/\text{m}^3$)	9.64	9.51	52	9.84	39	9.32	54
Ozone (ppb)	50.9	50.1	68	49.8	60	47.4	68
NATA* Diesel PM ($\mu\text{g}/\text{m}^3$)	0.667	0.439	81	0.918	<50th	0.937	<50th
NATA* Cancer Risk (lifetime risk per million)	35	34	65	42	<50th	40	<50th
NATA* Respiratory Hazard Index	1.6	1.3	77	1.8	<50th	1.8	<50th
Traffic Proximity and Volume (daily traffic count/distance to road)	110	58	86	350	55	590	53
Lead Paint Indicator (% Pre-1960 Housing)	0.11	0.35	14	0.37	26	0.3	37
NPL Proximity (site count/km distance)	0.15	0.074	88	0.15	73	0.13	78
RMP Proximity (facility count/km distance)	0.18	0.29	66	0.35	57	0.43	50
TSDF Proximity (facility count/km distance)	0.16	0.076	86	0.11	82	0.072	90
Water Discharger Proximity (facility count/km distance)	0.95	0.42	88	0.37	90	0.31	93
Demographic Indicators							
Demographic Index	36%	24%	89	30%	70	36%	58
Minority Population	24%	7%	94	31%	55	37%	45
Low Income Population	47%	40%	70	29%	82	35%	72
Linguistically Isolated Population	5%	0%	98	2%	83	5%	71
Population With Less Than High School Education	3%	16%	7	12%	18	14%	17
Population Under 5 years of age	6%	6%	60	6%	57	6%	52
Population over 64 years of age	11%	17%	20	15%	37	14%	44

* The National-Scale Air Toxics Assessment (NATA) is EPA's ongoing, comprehensive evaluation of air toxics in the United States. EPA developed the NATA to prioritize air toxics, emission sources, and locations of interest for further study. It is important to remember that NATA provides broad estimates of health risks over geographic areas of the country, not definitive risks to specific individuals or locations. More information on the NATA analysis can be found at: <https://www.epa.gov/national-air-toxics-assessment>.

For additional information, see: www.epa.gov/environmentaljustice

EJSCREEN is a screening tool for pre-decisional use only. It can help identify areas that may warrant additional consideration, analysis, or outreach. It does not provide a basis for decision-making, but it may help identify potential areas of EJ concern. Users should keep in mind that screening tools are subject to substantial uncertainty in their demographic and environmental data, particularly when looking at small geographic areas. Important caveats and uncertainties apply to this screening-level information, so it is essential to understand the limitations on appropriate interpretations and applications of these indicators. Please see EJSCREEN documentation for discussion of these issues before using reports. This screening tool does not provide data on every environmental impact and demographic factor that may be relevant to a particular location. EJSCREEN outputs should be supplemented with additional information and local knowledge before taking any action to address potential EJ concerns.

Location: User-specified linear location

Ring (buffer): 0.25-mile radius

Description: Van Voorhis Rd Improvement

Summary of ACS Estimates		2010 - 2014
Population		4,139
Population Density (per sq. mile)		5,389
Minority Population		993
% Minority		24%
Households		1,512
Housing Units		1,882
Housing Units Built Before 1950		99
Per Capita Income		24,854
Land Area (sq. miles) (Source: SF1)		0.77
% Land Area		99%
Water Area (sq. miles) (Source: SF1)		0.00
% Water Area		1%

	2010 - 2014 ACS Estimates	Percent	MOE (±)
Population by Race			
Total	4,139	100%	543
Population Reporting One Race	3,930	95%	1,083
White	3,215	78%	520
Black	331	8%	151
American Indian	7	0%	30
Asian	347	8%	341
Pacific Islander	0	0%	11
Some Other Race	30	1%	30
Population Reporting Two or More Races	209	5%	152
Total Hispanic Population	93	2%	150
Total Non-Hispanic Population	4,046		
White Alone	3,146	76%	464
Black Alone	325	8%	148
American Indian Alone	7	0%	30
Non-Hispanic Asian Alone	347	8%	341
Pacific Islander Alone	0	0%	11
Other Race Alone	19	0%	30
Two or More Races Alone	201	5%	152
Population by Sex			
Male	1,969	48%	342
Female	2,170	52%	339
Population by Age			
Age 0-4	254	6%	77
Age 0-17	616	15%	165
Age 18+	3,523	85%	439
Age 65+	463	11%	126

Data Note: Detail may not sum to totals due to rounding. Hispanic population can be of any race. N/A means not available.

Source: U.S. Census Bureau, American Community Survey (ACS) 2010 - 2014.

Location: User-specified linear location

Ring (buffer): 0.25-mile radius

Description: Van Voorhis Rd Improvement

	2010 - 2014 ACS Estimates	Percent	MOE (±)
Population by Language Spoken at Home*			
Total (persons age 5 and above)	3,885	100%	543
English	N/A	N/A	N/A
Spanish	N/A	N/A	N/A
French	N/A	N/A	N/A
French Creole	N/A	N/A	N/A
Italian	N/A	N/A	N/A
Portuguese	N/A	N/A	N/A
German	N/A	N/A	N/A
Yiddish	N/A	N/A	N/A
Other West Germanic	N/A	N/A	N/A
Scandinavian	N/A	N/A	N/A
Greek	N/A	N/A	N/A
Russian	N/A	N/A	N/A
Polish	N/A	N/A	N/A
Serbo-Croatian	N/A	N/A	N/A
Other Slavic	N/A	N/A	N/A
Armenian	N/A	N/A	N/A
Persian	N/A	N/A	N/A
Gujarathi	N/A	N/A	N/A
Hindi	N/A	N/A	N/A
Urdu	N/A	N/A	N/A
Other Indic	N/A	N/A	N/A
Other Indo-European	N/A	N/A	N/A
Chinese	N/A	N/A	N/A
Japanese	N/A	N/A	N/A
Korean	N/A	N/A	N/A
Mon-Khmer, Cambodian	N/A	N/A	N/A
Hmong	N/A	N/A	N/A
Thai	N/A	N/A	N/A
Laotian	N/A	N/A	N/A
Vietnamese	N/A	N/A	N/A
Other Asian	N/A	N/A	N/A
Tagalog	N/A	N/A	N/A
Other Pacific Island	N/A	N/A	N/A
Navajo	N/A	N/A	N/A
Other Native American	N/A	N/A	N/A
Hungarian	N/A	N/A	N/A
Arabic	N/A	N/A	N/A
Hebrew	N/A	N/A	N/A
African	N/A	N/A	N/A
Other and non-specified	N/A	N/A	N/A
Total Non-English	N/A	N/A	N/A

Data Note: Detail may not sum to totals due to rounding. Hispanic population can be of any race. N/A means not available. **Source:** U.S. Census Bureau, American Community Survey (ACS) 2010 - 2014.

*Population by Language Spoken at Home is available at the census tract summary level and up.

0.25 mile Ring around the Corridor, WEST VIRGINIA, EPA Region 3

Approximate Population: 213

Input Area (sq. miles): 0.25

White Park Connector

Selected Variables	State Percentile	EPA Region Percentile	USA Percentile
EJ Indexes			
EJ Index for PM2.5	95	75	66
EJ Index for Ozone	95	75	66
EJ Index for NATA* Diesel PM	95	74	65
EJ Index for NATA* Air Toxics Cancer Risk	94	74	63
EJ Index for NATA* Respiratory Hazard Index	95	74	63
EJ Index for Traffic Proximity and Volume	96	78	69
EJ Index for Lead Paint Indicator	95	80	74
EJ Index for Proximity to NPL sites	99	87	84
EJ Index for Proximity to RMP sites	99	92	85
EJ Index for Proximity to TSDFs	99	90	89
EJ Index for Proximity to Major Direct Dischargers	97	92	89



This report shows the values for environmental and demographic indicators and EJSCREEN indexes. It shows environmental and demographic raw data (e.g., the estimated concentration of ozone in the air), and also shows what percentile each raw data value represents. These percentiles provide perspective on how the selected block group or buffer area compares to the entire state, EPA region, or nation. For example, if a given location is at the 95th percentile nationwide, this means that only 5 percent of the US population has a higher block group value than the average person in the location being analyzed. The years for which the data are available, and the methods used, vary across these indicators. Important caveats and uncertainties apply to this screening-level information, so it is essential to understand the limitations on appropriate interpretations and applications of these indicators. Please see EJSCREEN documentation for discussion of these issues before using reports.

EJSCREEN Report (Version 2016)



0.25 mile Ring around the Corridor, WEST VIRGINIA, EPA Region 3

Approximate Population: 213

Input Area (sq. miles): 0.25

White Park Connector

Selected Variables	Value	State Avg.	%ile in State	EPA Region Avg.	%ile in EPA Region	USA Avg.	%ile in USA
Environmental Indicators							
Particulate Matter (PM 2.5 in $\mu\text{g}/\text{m}^3$)	9.52	9.51	46	9.84	36	9.32	51
Ozone (ppb)	50.8	50.1	65	49.8	59	47.4	67
NATA* Diesel PM ($\mu\text{g}/\text{m}^3$)	0.578	0.439	76	0.918	<50th	0.937	<50th
NATA* Cancer Risk (lifetime risk per million)	30	34	37	42	<50th	40	<50th
NATA* Respiratory Hazard Index	1.2	1.3	48	1.8	<50th	1.8	<50th
Traffic Proximity and Volume (daily traffic count/distance to road)	120	58	86	350	57	590	54
Lead Paint Indicator (% Pre-1960 Housing)	0.35	0.35	58	0.37	56	0.3	65
NPL Proximity (site count/km distance)	0.43	0.074	97	0.15	93	0.13	94
RMP Proximity (facility count/km distance)	1.8	0.29	97	0.35	96	0.43	95
TSDF Proximity (facility count/km distance)	0.51	0.076	98	0.11	97	0.072	98
Water Discharger Proximity (facility count/km distance)	1.6	0.42	94	0.37	96	0.31	97
Demographic Indicators							
Demographic Index	39%	24%	92	30%	73	36%	62
Minority Population	29%	7%	96	31%	60	37%	51
Low Income Population	46%	40%	67	29%	81	35%	71
Linguistically Isolated Population	0%	0%	87	2%	55	5%	44
Population With Less Than High School Education	14%	16%	50	12%	69	14%	62
Population Under 5 years of age	4%	6%	38	6%	35	6%	31
Population over 64 years of age	13%	17%	29	15%	46	14%	53

* The National-Scale Air Toxics Assessment (NATA) is EPA's ongoing, comprehensive evaluation of air toxics in the United States. EPA developed the NATA to prioritize air toxics, emission sources, and locations of interest for further study. It is important to remember that NATA provides broad estimates of health risks over geographic areas of the country, not definitive risks to specific individuals or locations. More information on the NATA analysis can be found at: <https://www.epa.gov/national-air-toxics-assessment>.

For additional information, see: www.epa.gov/environmentaljustice

EJSCREEN is a screening tool for pre-decisional use only. It can help identify areas that may warrant additional consideration, analysis, or outreach. It does not provide a basis for decision-making, but it may help identify potential areas of EJ concern. Users should keep in mind that screening tools are subject to substantial uncertainty in their demographic and environmental data, particularly when looking at small geographic areas. Important caveats and uncertainties apply to this screening-level information, so it is essential to understand the limitations on appropriate interpretations and applications of these indicators. Please see EJSCREEN documentation for discussion of these issues before using reports. This screening tool does not provide data on every environmental impact and demographic factor that may be relevant to a particular location. EJSCREEN outputs should be supplemented with additional information and local knowledge before taking any action to address potential EJ concerns.

Location: User-specified linear location
 Ring (buffer): 0.25-mile radius
 Description: White Park Connector

Summary of ACS Estimates		2010 - 2014	
Population			213
Population Density (per sq. mile)			288
Minority Population			62
% Minority			29%
Households			89
Housing Units			91
Housing Units Built Before 1950			26
Per Capita Income			23,491
Land Area (sq. miles) (Source: SF1)			0.74
% Land Area			99%
Water Area (sq. miles) (Source: SF1)			0.00
% Water Area			1%
	2010 - 2014 ACS Estimates	Percent	MOE (±)
Population by Race			
Total	213	100%	242
Population Reporting One Race	203	95%	411
White	154	72%	230
Black	43	20%	95
American Indian	1	1%	21
Asian	1	0%	16
Pacific Islander	1	0%	18
Some Other Race	2	1%	31
Population Reporting Two or More Races	10	5%	80
Total Hispanic Population	10	5%	62
Total Non-Hispanic Population	203		
White Alone	151	71%	230
Black Alone	42	20%	96
American Indian Alone	1	1%	21
Non-Hispanic Asian Alone	1	0%	16
Pacific Islander Alone	1	0%	18
Other Race Alone	0	0%	11
Two or More Races Alone	7	3%	60
Population by Sex			
Male	147	69%	219
Female	66	31%	157
Population by Age			
Age 0-4	9	4%	72
Age 0-17	21	10%	100
Age 18+	192	90%	241
Age 65+	27	13%	94

Data Note: Detail may not sum to totals due to rounding. Hispanic population can be of any race. N/A means not available.

Source: U.S. Census Bureau, American Community Survey (ACS) 2010 - 2014.

EJSCREEN ACS Summary Report



Location: User-specified linear location

Ring (buffer): 0.25-mile radius

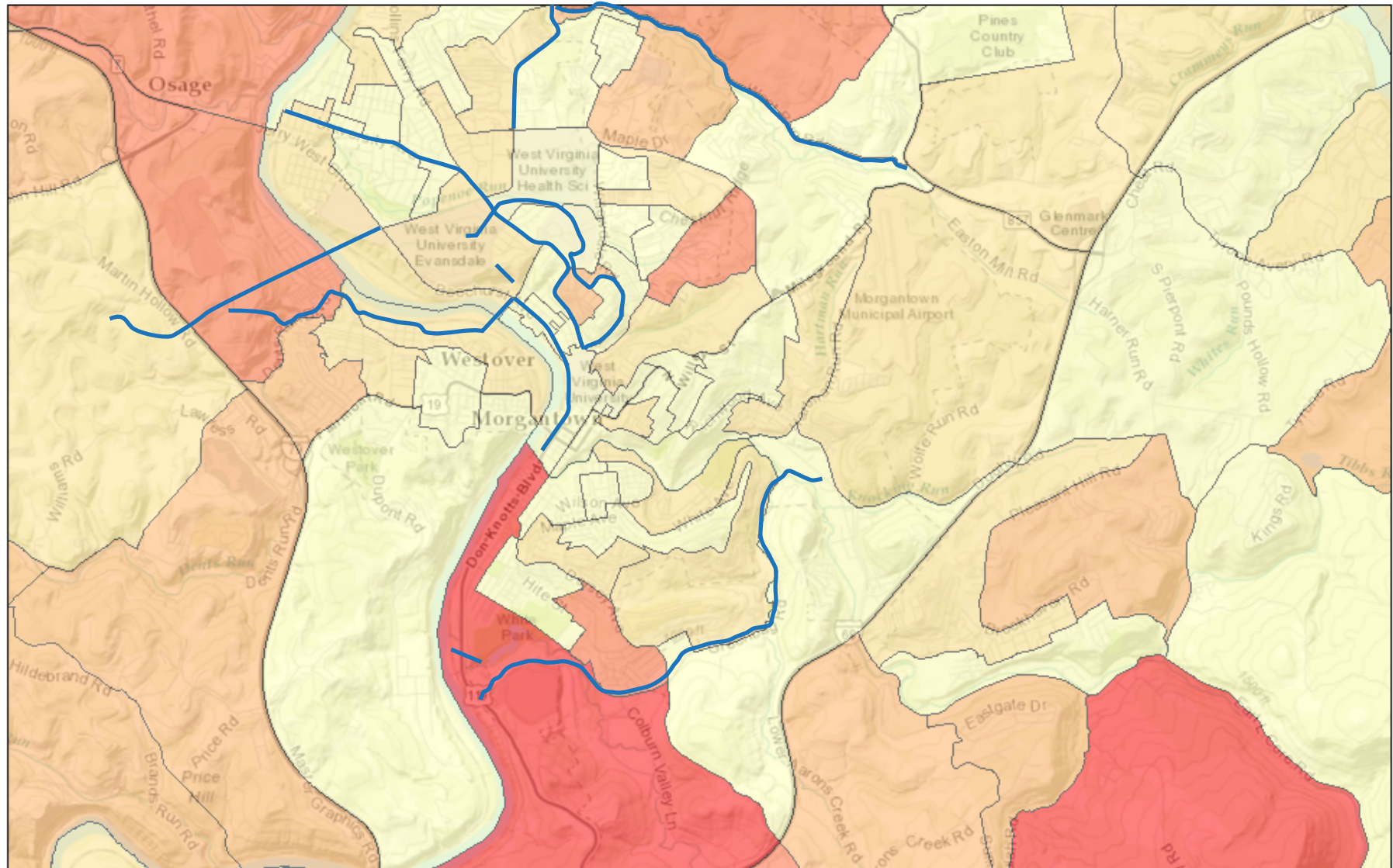
Description: White Park Connector

	2010 - 2014 ACS Estimates	Percent	MOE (±)
Population by Language Spoken at Home*			
Total (persons age 5 and above)	204	100%	232
English	N/A	N/A	N/A
Spanish	N/A	N/A	N/A
French	N/A	N/A	N/A
French Creole	N/A	N/A	N/A
Italian	N/A	N/A	N/A
Portuguese	N/A	N/A	N/A
German	N/A	N/A	N/A
Yiddish	N/A	N/A	N/A
Other West Germanic	N/A	N/A	N/A
Scandinavian	N/A	N/A	N/A
Greek	N/A	N/A	N/A
Russian	N/A	N/A	N/A
Polish	N/A	N/A	N/A
Serbo-Croatian	N/A	N/A	N/A
Other Slavic	N/A	N/A	N/A
Armenian	N/A	N/A	N/A
Persian	N/A	N/A	N/A
Gujarathi	N/A	N/A	N/A
Hindi	N/A	N/A	N/A
Urdu	N/A	N/A	N/A
Other Indic	N/A	N/A	N/A
Other Indo-European	N/A	N/A	N/A
Chinese	N/A	N/A	N/A
Japanese	N/A	N/A	N/A
Korean	N/A	N/A	N/A
Mon-Khmer, Cambodian	N/A	N/A	N/A
Hmong	N/A	N/A	N/A
Thai	N/A	N/A	N/A
Laotian	N/A	N/A	N/A
Vietnamese	N/A	N/A	N/A
Other Asian	N/A	N/A	N/A
Tagalog	N/A	N/A	N/A
Other Pacific Island	N/A	N/A	N/A
Navajo	N/A	N/A	N/A
Other Native American	N/A	N/A	N/A
Hungarian	N/A	N/A	N/A
Arabic	N/A	N/A	N/A
Hebrew	N/A	N/A	N/A
African	N/A	N/A	N/A
Other and non-specified	N/A	N/A	N/A
Total Non-English	N/A	N/A	N/A

Data Note: Detail may not sum to totals due to rounding. Hispanic population can be of any race. N/A means not available. **Source:** U.S. Census Bureau, American Community Survey (ACS) 2010 - 2014.

*Population by Language Spoken at Home is available at the census tract summary level and up.

Education Less than High School



July 25, 2016

by Block Group

0 - 31

31 - 70

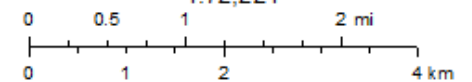
70 - 123

123 - 217

217 - 4805

Location of Teir 1 Projects Recommended
in the 2013-2040 LRTP

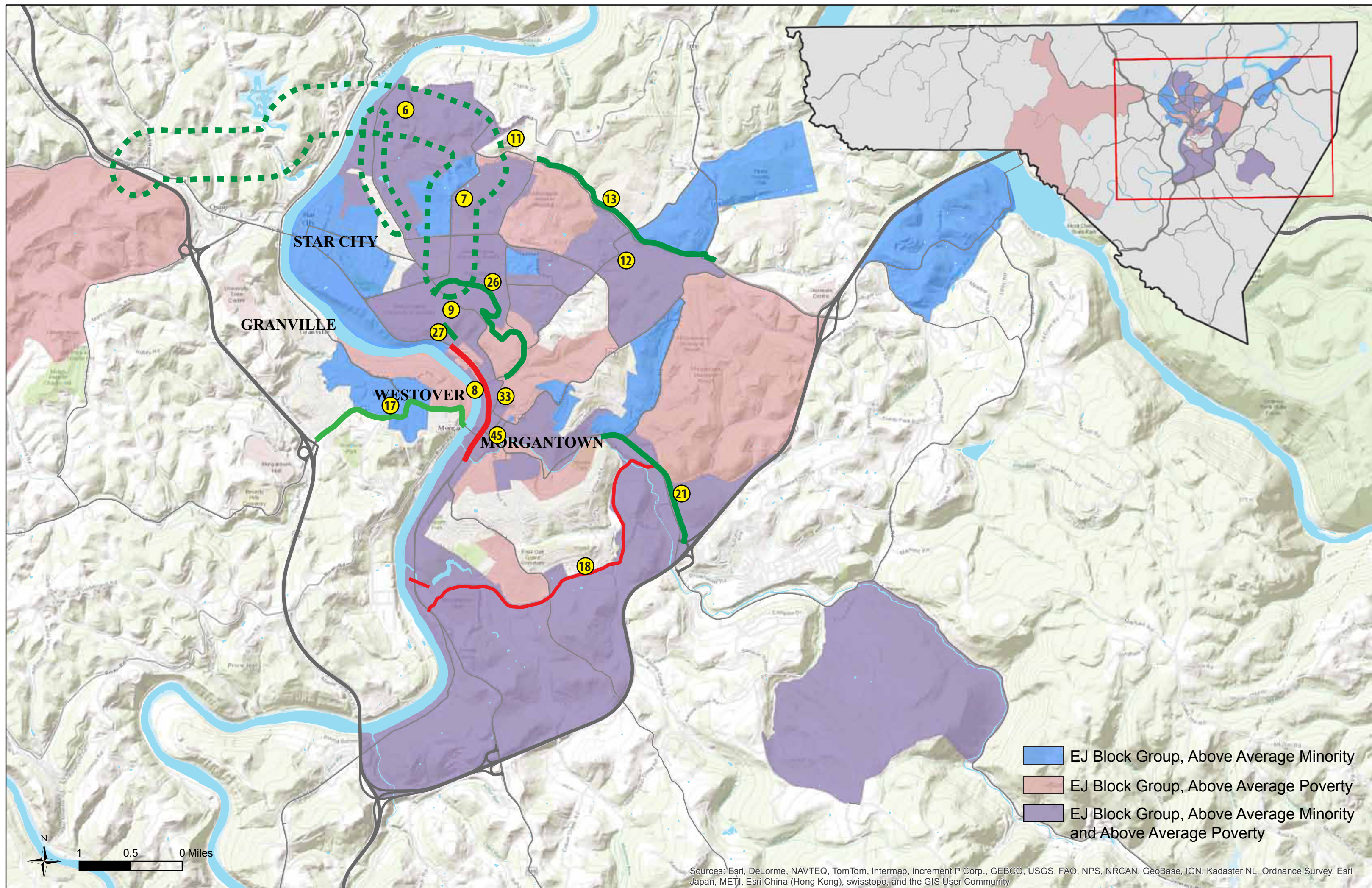
1:72,224



Sources: Esri, HERE, DeLorme, Intermap, increment P Corp., GEBCO, USGS, FAO, NPS, NRCAN, GeoBase, IGN, Kadaster NL, Ordnance Survey,

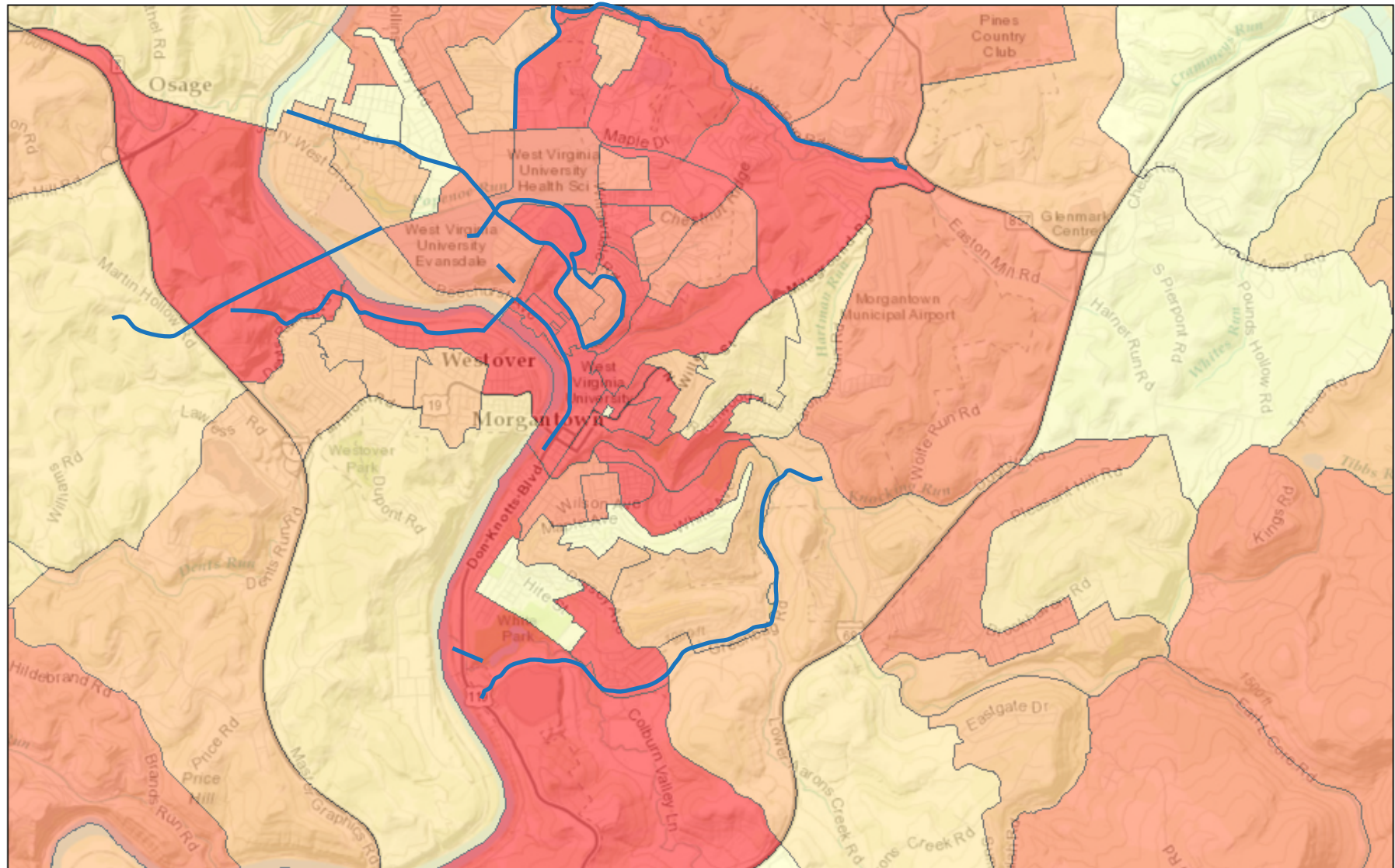
Source: U.S. Census Bureau, American Community Survey 2010-2014

FIGURE 2016



Project #	Priority	Project Name	Population (0.25 mile radius)	Population Density (per sq. mile)	Households	Per Capita Income	Minority Percentage	Demographic Index Total	Minority Population %ile in State	Minority Population %ile in EPA Region	Low Income Popualtion %ile State	Low Income Population %ile in EPA Region	Linguistically Isolated Population %ile in State	Linguistically Isolated Population %ile in EPA Region	Population With Less Than High School Education %ile in State	Population With Less Than High School %ile in EPA Region	Population over 64 years of age %ile in State	Population over 64 years of age %ile in EPA Region	Invirnmental Index Total	EJ Index for PM 2.5 %ile in State	EJ Index for PM 2.5 %ile EPA Region	EJ Index for NATA Diesel PM %ile in State	EJ Index for NATA Diesel PM %ile in EPA Region	EJ Index for Traffic Proximity and Volume %ile in State	EJ Index for Traffic Proximity and Volume %ile in EPA Region
7	P	Van Voorhis Rd Improvements	4,139	5,389	1512	\$24,854	24%	564	94	55	70	82	98	83	7	18	20	37	385	86	68	62	63	51	55
8	P	Beechurst Ave Improvements	4,420	7,662	1,421	\$14,996	17%	542	88	45	98	98	89	57	21	41	1	4	525	95	76	97	77	98	82
11	P	West Run Improvements-Western Section	2,503	3,865	996	\$30,462	21%	532	92	51	60	77	92	65	13	30	18	34	292	76	63	42	56	19	36
18	P	Greenbag Rd Improvements	3,355	2,137	809	\$25,421	18%	608	90	48	69	82	88	57	48	67	21	38	482	88	69	88	69	94	74
45	P	Downtown Morgantown Signalization and Street Design	4,686	8,601	1,338	\$15,923	16%	569	88	44	96	96	93	68	23	44	4	13	523	95	76	97	78	97	80
6	Tier 1	I-79 Access Improvements Phase I	5,311	2,424	2,121	\$25,668	27%	550	95	58	64	79	97	80	7	19	17	34	349	53	39	78	49	80	50
33	Tier 1	Grumbein’s Island Grade Separation	2,571	12,335	238	\$10,871	15%	553	86	42	98	97	95	71	20	39	1	4	413	49	37	96	75	92	64
12	Tier 1	Stewartstown Rd Improvements	1,803	3,111	786	\$29,129	13%	463	84	40	67	80	87	55	10	25	4	11	358	52	39	75	49	86	57
13	Tier 1	West Run Improvements-Eastern Section	1,493	3,950	580	\$25,332	17%	464	89	46	68	81	87	55	5	15	4	14	281	72	60	42	56	17	34
21	Tier 1	Earl Core Road (WV 7) -Northern Section	1,142	1,430	434	\$22,069	18%	473	89	47	27	58	88	56	19	39	17	33	335	47	36	79	49	77	47
9	Tier 1	University Ave Complete Street Improvements	13,995	8,698	3,702	\$16,752	15%	541	85	42	93	94	94	70	16	34	3	10	403	50	38	94	65	92	64
17	Tier 1	Fairmont Rd/Holland Ave Improvements Phase I	2,639	3,042	1,205	\$22,909	10%	503	74	32	57	76	88	55	19	39	23	40	387	50	38	82	49	96	72
26	Tier 1	North-side Connector Bus Rapid Transit	9,527	7,465	2,341	\$15,384	13%	546	84	40	96	96	96	75	16	35	2	6	413	90	70	93	72	39	49
27	Tier 1	Grant Avenue Bicycle/Pedestrian Connector	3,057	10,155	523	\$17,336	17%	539	88	46	94	94	97	79	9	22	2	8	236	63	56	33	51	8	25

Household Income <15K



July 25, 2016

by Block Group

0 - 16
16 - 37

37 - 64

64 - 108

108 - 118.1

Location of Teir 1 Projects Recommended
in the 2013-2040 LRTP

1:72,224

0 0.5 1 2 mi
0 1 2 4 km




Sources: Esri, HERE, DeLorme, Intermap, Incorement P Corp., GEBCO, USGS, FAO, NPS, NRCAN, GeoBase, IGN, Kadaster NL, Ordnance Survey,

Source: U.S. Census Bureau, American Community Survey 2010-2014

F:\SCREEN 2016

A detailed topographic map of the Morgantown, West Virginia area. The Kanawha River flows through the center of the map. Major roads shown include US-52, US-40, and various local roads like Don Knotts Blvd, DuPont Rd, and Easton Mill Rd. Landmarks such as West Virginia University, Morgan State University, and the Morgan State Municipal Airport are labeled. The map uses color shading to represent elevation, with green for lower areas and brown/orange for higher terrain. A blue line indicates a specific route or boundary across the map.

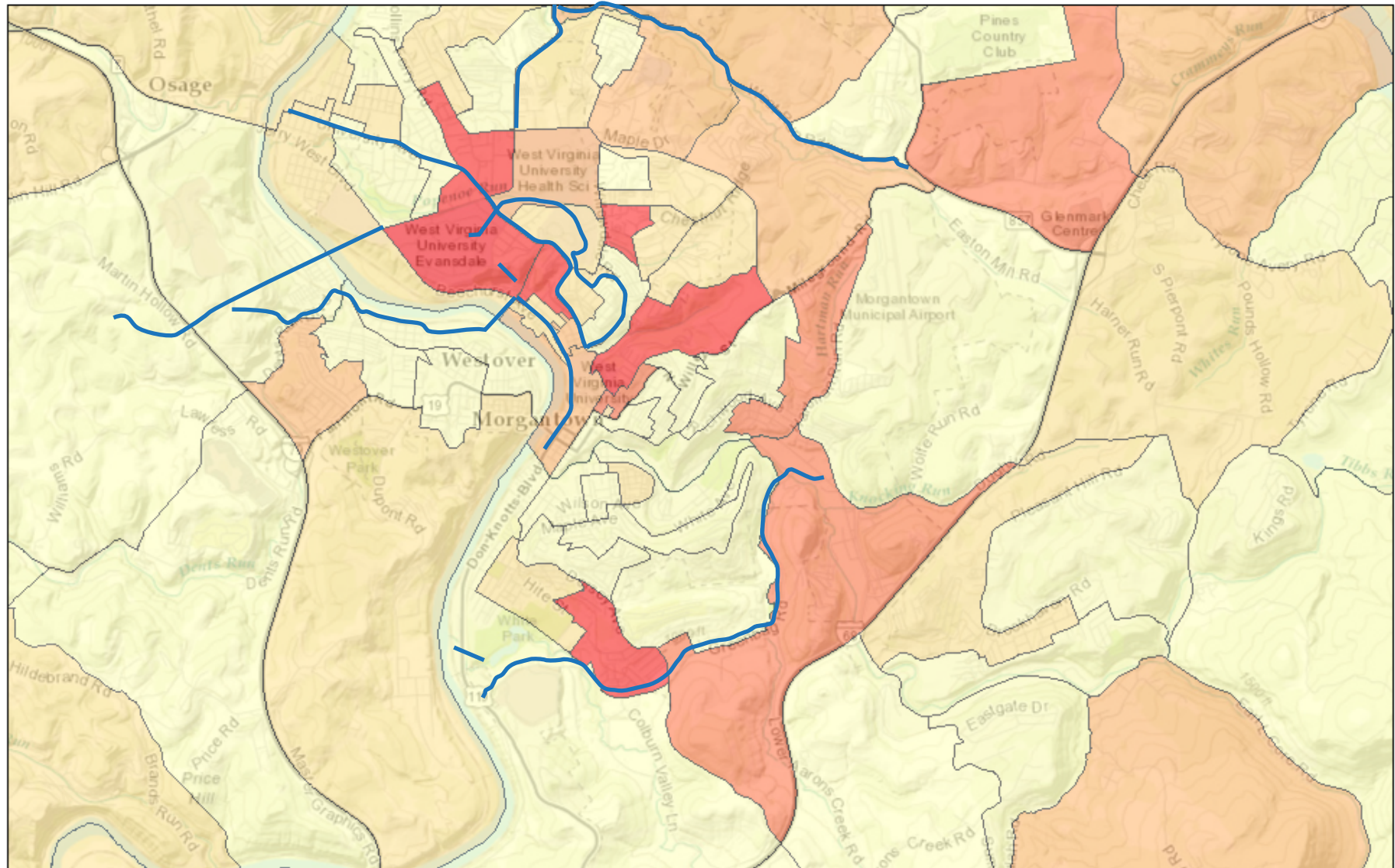
- ☐ 2499 - 33726
- ☐ 33726 - 45651

	45651 - 59145
	59145 - 80673
	80673 - 250001

A number line with two scales. The top scale is labeled 'mi' and has major tick marks at 0, 0.5, 1, and 2. The bottom scale is labeled 'km' and has major tick marks at 0, 1, 2, and 4. Vertical lines connect the corresponding tick marks between the two scales, showing that 1 mile is equivalent to 1.6 kilometers.

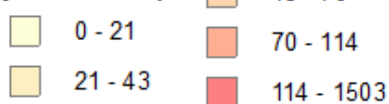
F.I.S.C.R.F.F.N 2016

Unemployed in Civilian Labor Force



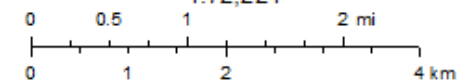
July 25, 2016

by Block Group



Location of Teir 1 Projects Recommended
in the 2013-2040 LRTP

1:72,224



Sources: Esri, HERE, DeLorme, Intermap, Incentiv P Corp., GEBCO, USGS, FAO, NPS, NRCAN, GeoBase, IGN, Kadaster NL, Ordnance Survey,

Source: U.S. Census Bureau, American Community Survey 2010-2014