



# Don Knotts Boulevard Pedestrian Bridge Feasibility Study

May 15, 2025



Kimley»Horn

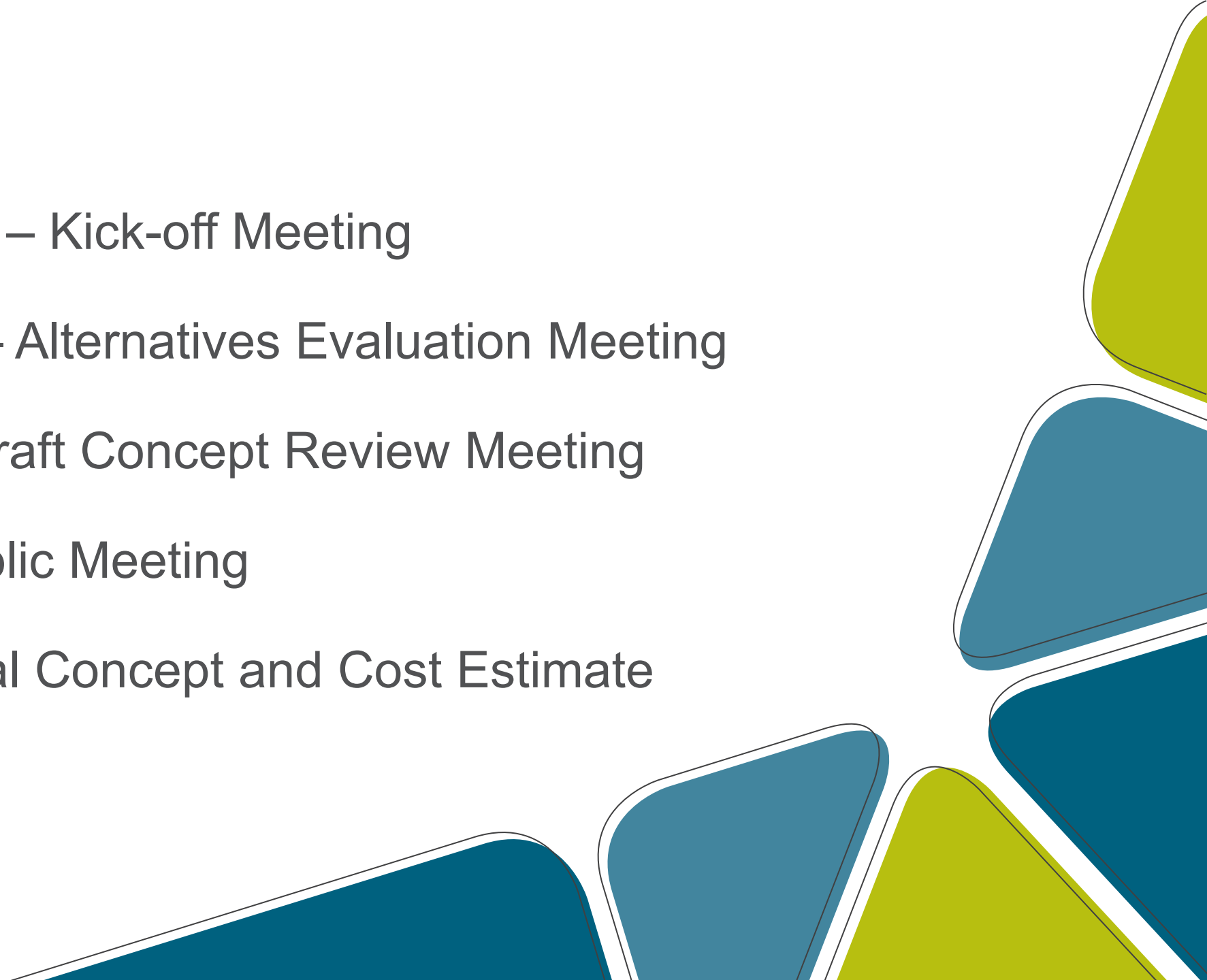
# Purpose of the Study

Evaluate feasibility and cost of a grade separate crossing from the First Ward neighborhood to the Caperton Trail at the Mountaineer Heritage Park



# Schedule

- December 2024 – Kick-off Meeting
- February 2025 – Alternatives Evaluation Meeting
- March 2025 – Draft Concept Review Meeting
- April 2025 – Public Meeting
- May 2025 – Final Concept and Cost Estimate



# Constraints

- Topography
- Private Property
- Utilities
- WVDOT Development Plans
- ADA/PROWAG design guidelines

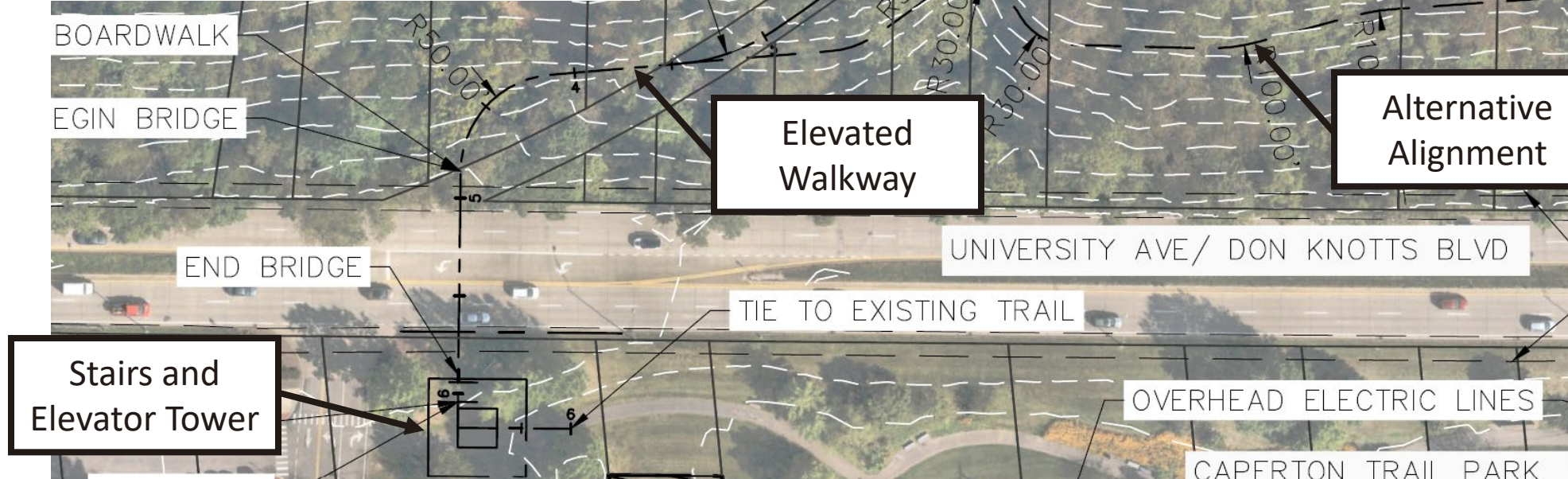
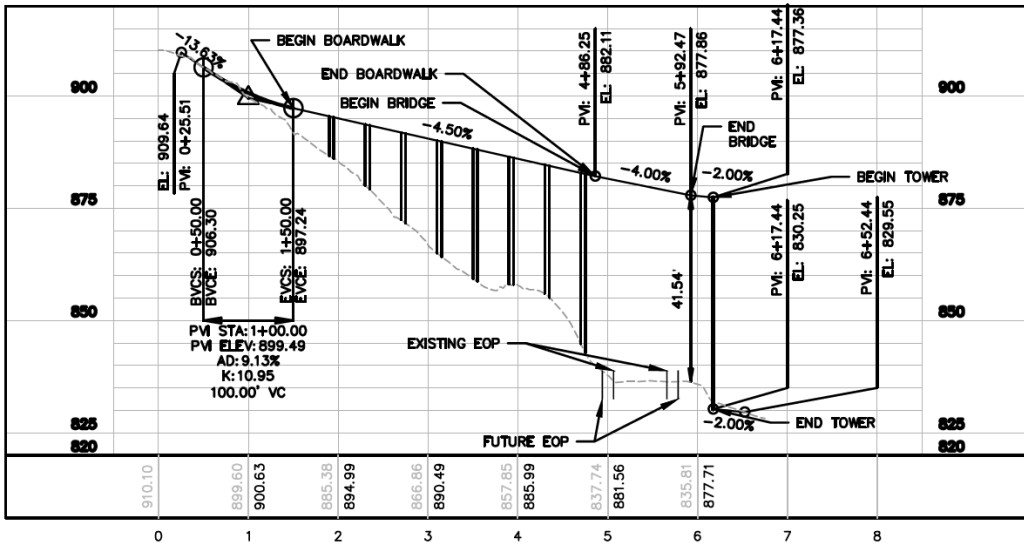


# Alternatives Evaluated

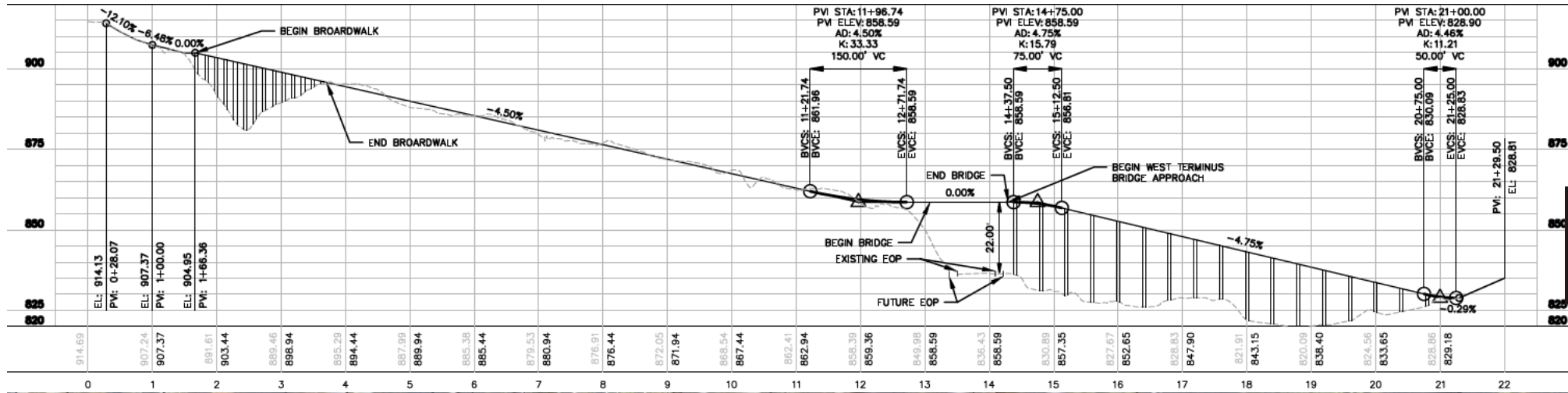
- At-grade crossing discarded based on WVDOT coordination
- Meadow Lane
- Lawnwood Street
- Ramp tie-ins to Park



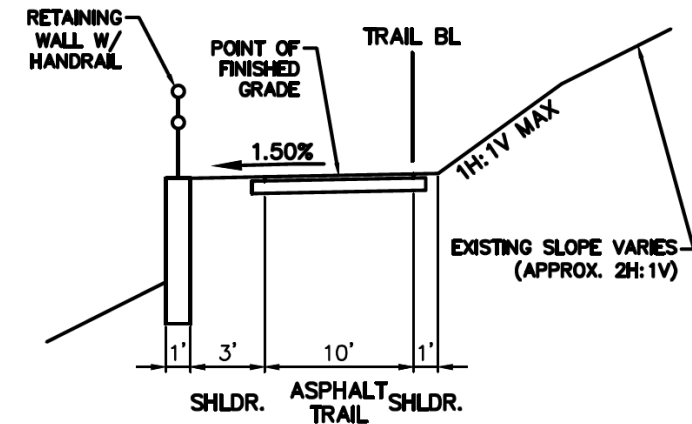
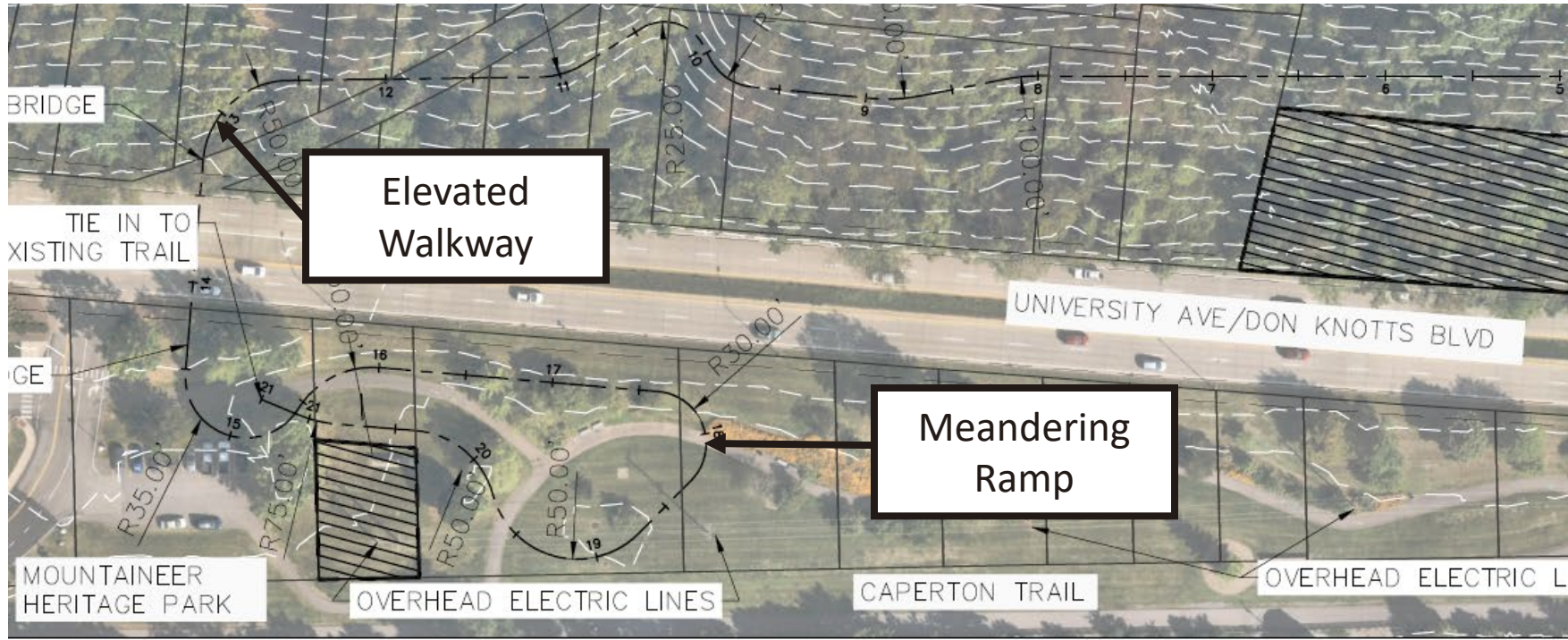
# Alternatives Evaluated – Meadow Lane



# Alternatives Evaluated – Lawnwood St



Boardwalk



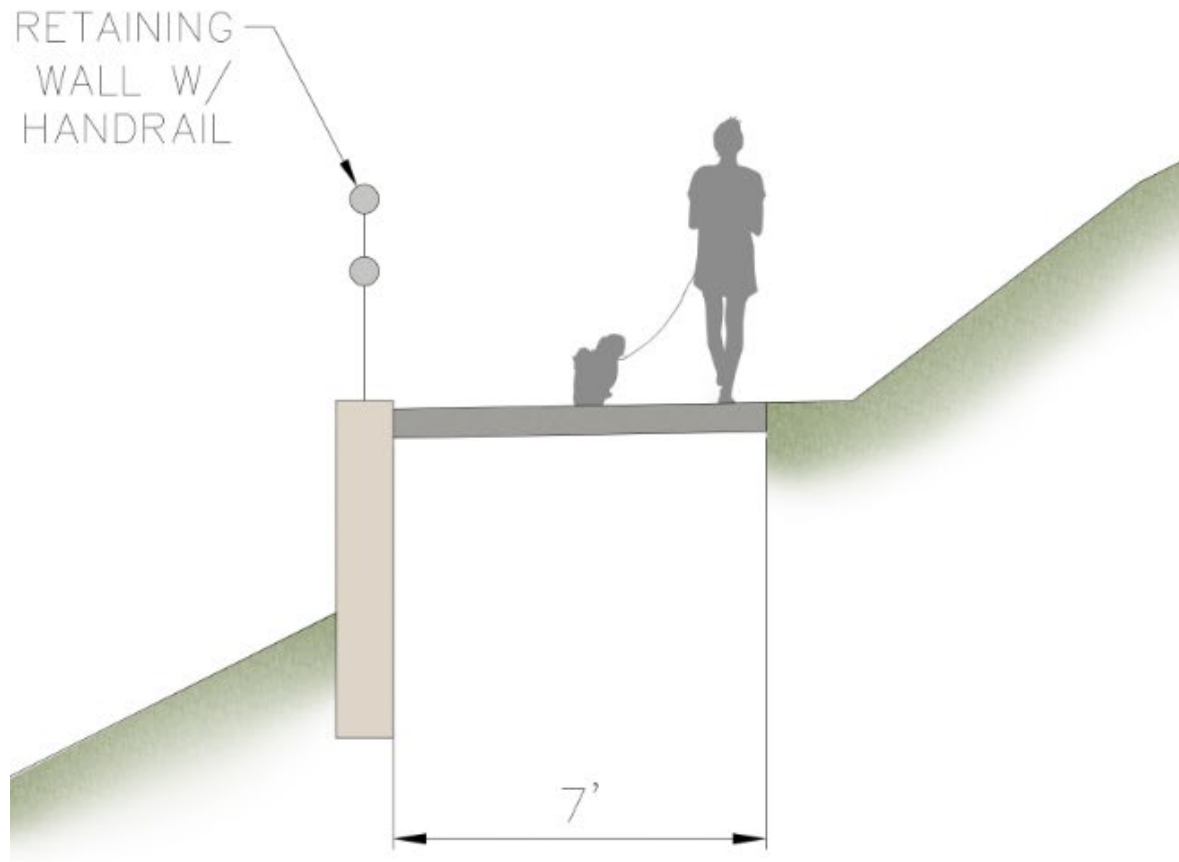
# Draft Concept for Public

- Meetings April 3 and 11
- Touch the Earth Festival April 19
- 177 survey responses

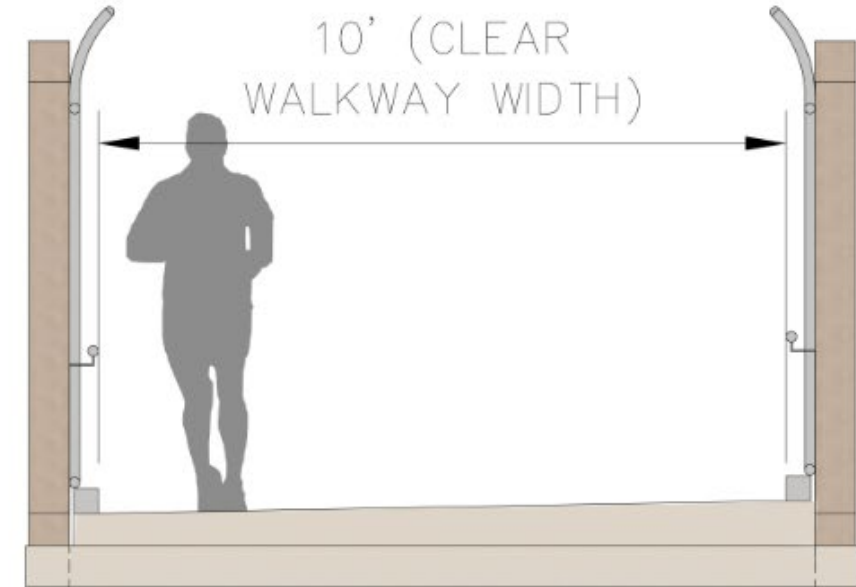


# Draft Concept for Public

**A. ASPHALT TRAIL TYPICAL**



**B. BOARDWALK PATHWAY TYPICAL**

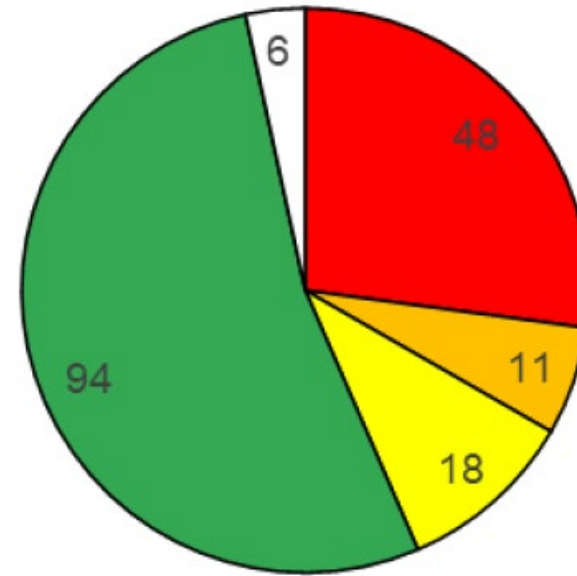


# Draft Concept for Public



# Public Feedback

- Majority in support
- Benefits:
  - Key connection
  - Alternative transportation
  - Recreational asset
- Concerns:
  - Community safety
  - Maintained Meadow Lane access
  - High cost
  - Noise, traffic, and lighting impacts



■ Red ■ Orange ■ Yellow ■ Green ■ None

# Anticipated Costs

## **\$11.1 Million – Includes:**

- Multi-use path and curb ramps (\$0.4M)
- Retaining wall (\$2.5M)
- Boardwalk, Elevated walkway, bridge, and ramp (\$3.7M)
- Alternative stairs (\$0.25M)
- Drainage (\$0.15M)
- Mobilization and Construction Survey (\$0.5M)
- MOT (\$0.15M)
- Clearing and Grading (\$0.1M)
- Lighting and handrail (\$0.6M)
- CEI and CA (\$0.8M)
- 25% contingency (\$2M)

## **\$7.4 Million – Includes:**

- Multi-use path and curb ramps (\$0.3M)
- Retaining wall (\$0.2M)
- Boardwalk, Elevated walkway, bridge, and ramp (\$3.7M)
- Drainage (\$0.15M)
- Mobilization and Construction Survey (\$0.3M)
- MOT (\$0.15M)
- Clearing and Grading (\$0.2M)
- Lighting and handrail (\$0.6M)
- CEI and CA (\$0.5M)
- 25% contingency (\$1.3M)